



Installation Instructions for 30-1930 Fuel Ignition Controller (F/IC)

WARNING:



This installation is not for the electrically or mechanically challenged! Use the F/IC with EXTREME caution! If you are uncomfortable with anything about this, please refer the installation to an AEM trained tuning shop or call 800-423-0046 for technical assistance. You should also visit the AEM Performance Electronics Forum at <http://www.aempower.com>

NOTE: AEM holds no responsibility for any engine damage that results from the misuse of this product!

Download the latest AEM software at:

<http://www.aemelectronics.com/downloads>

This product is legal in California for racing vehicles only and should never be used on public highways.

ADVANCED ENGINE MANAGEMENT INC.
2205 126th Street Unit A, Hawthorne, CA. 90250
Phone: (310) 484-2322 Fax: (310) 484-0152
<http://www.aempower.com>
Instruction Part Number: 10-1910 Rev 080710
© 2007 Advanced Engine Management, Inc.

Thank you for purchasing the AEM F/IC. Inside the box you will find the F/IC module, a universal wiring harness, a software CD, and other components needed to install the F/IC and adjust the FIC via a laptop or PC. See Figure 1. For more information on select vehicles, please visit the FIC section of the AEM Electronics Forum. The forum can be accessed from the AEM homepage (www.aempower.com), by clicking on the link titled "Forums".



- Kit Contents:
- * F/IC Module
 - * Flying Lead Harness
 - * Bypass plug
 - * Instructions
 - * USB Cable
 - * Vacuum Hose (3 Ft)
 - * Tee Fitting
 - * Zip Tie (3)

Figure 1. Kit Contents

Getting started

(Note: The following is a universal wiring installation. For more specific information on some of the more common vehicles, please visit the FIC section of the AEM Electronics Forum. Also, to make the install easier and to save you from cutting your factory harness, we recommend the use of a "patch" or "extension" harness. These harnesses are readily available from companies like Boomslang (<http://www.boomslang.us/>) or Auto Sport Wiring (<http://www.autosportwiring.com/>.) The first step in connecting the F/IC is to determine what features/functions are needed and which functions are not needed. The F/IC comes with a universal flying lead that has 66 non-terminated wires. At first glance, the bundle of wires is quite intimidating. However, by answering some questions about your vehicle and what you want to do with the F/IC, some of the wires can be eliminated. Before we begin, we must learn the two types of connections used with the F/IC: the tap and the intercept. See Figure 2.

WIRE CONNECTIONS

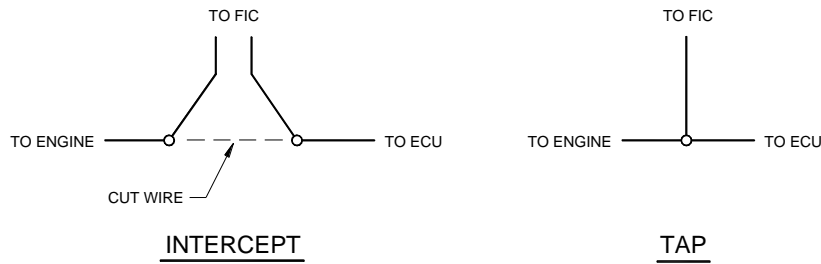
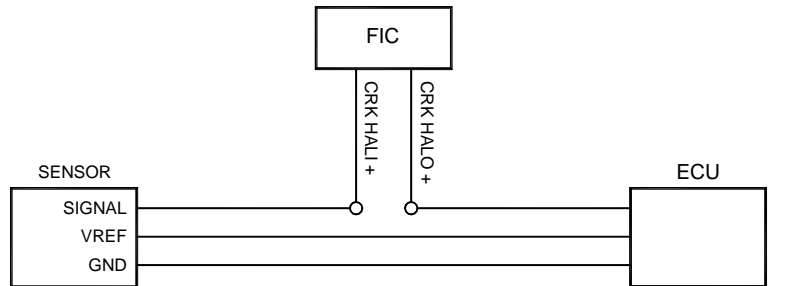


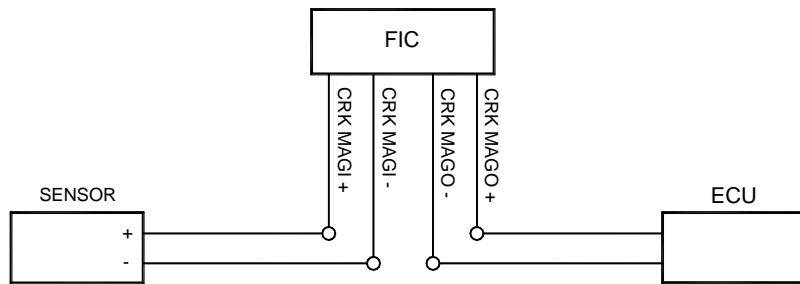
Figure 2. Wire Connections

Does your vehicle have a Mag/VR or Hall style Crank Sensor?

Magnetic(Mag) or Variable Reluctance(VR) style sensors typically have two wires. Hall style sensors typically have three wires. Vehicles have either a Mag/VR or a Hall style Crank Sensor, not both. If your vehicle has a Mag/VR sensor, the two Hall sensor wires can be eliminated. If your vehicle has a Hall sensor the four Mag sensor wires can be eliminated. Connect the Crank Sensor as shown below in Figure 3.



HALL STYLE CRANK CONNECTION



MAG STYLE CRANK CONNECTION

Figure 3. Crank Sensor Connection

Does your vehicle have one or two Cam Sensor(s)?

If your vehicle has one Cam Sensor, the two “Cam 2” Hall wires and four “Cam 2” Mag wires can be eliminated.

Does your vehicle have a Mag or Hall style Cam Sensor?

As with the Crank Sensor, a vehicle will have one or the other, not both. Either the “Cam 1” Hall or the Cam 1 Mag wires can be eliminated. Connect to Cam Sensor as shown below in Figure 4.

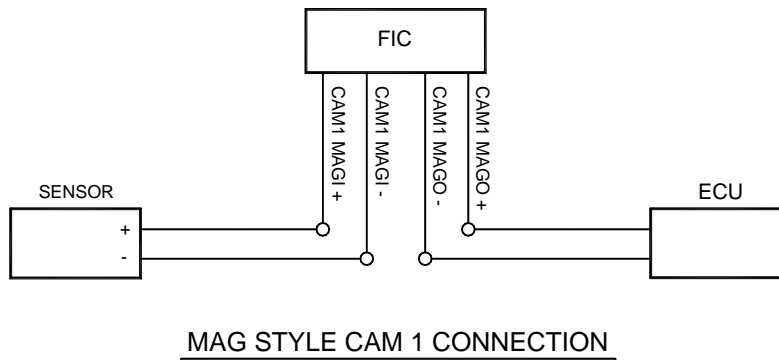
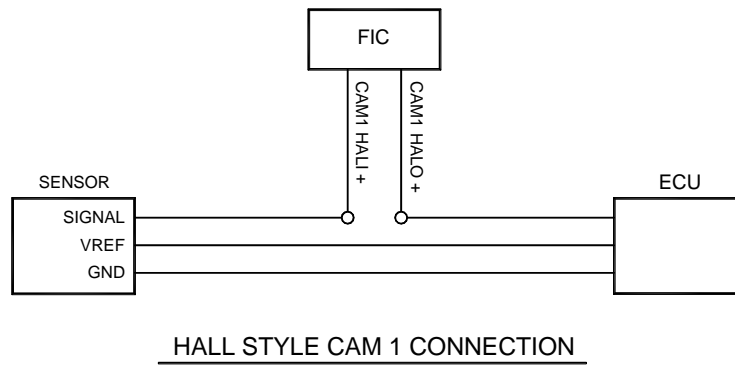


Figure 4. Cam 1 Connection

If your vehicle has two Cam Sensors, connect the “Cam 2” sensor as shown below in Figure 5.

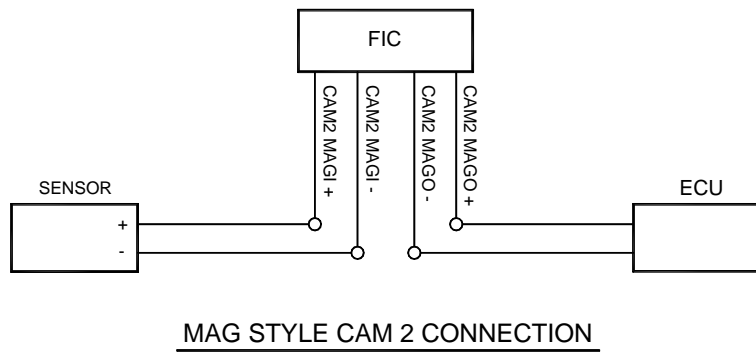
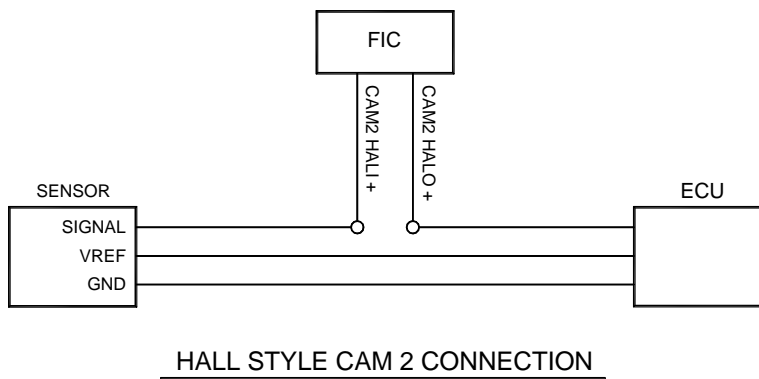
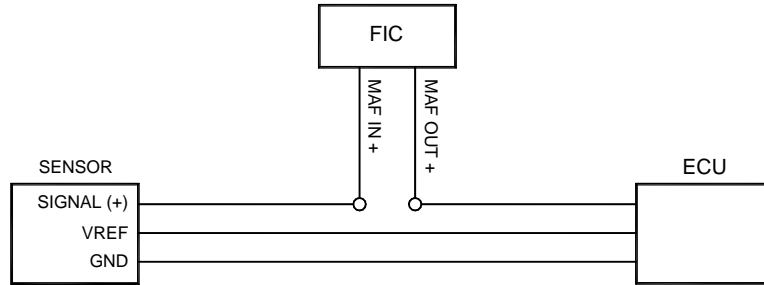


Figure 5. Cam 2 Connection

Do you want to modify or clamp the MAF Sensor voltage?

If not, the two MAF Sensor wires can be eliminated. If so, connect the MAF Sensor as shown below in Figure 6.

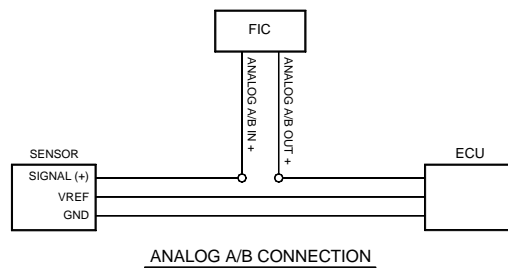


MAF CONNECTION

Figure 6. MAF Sensor Connection

Does your vehicle have both a MAP Sensor and a MAF Sensor? or Do you want to remap another analog signal on your car?

If so, connect the “Analog A/B” wires as shown below in Figure 7. If not, remove the unused wires for “Analog A/B”.



ANALOG A/B CONNECTION

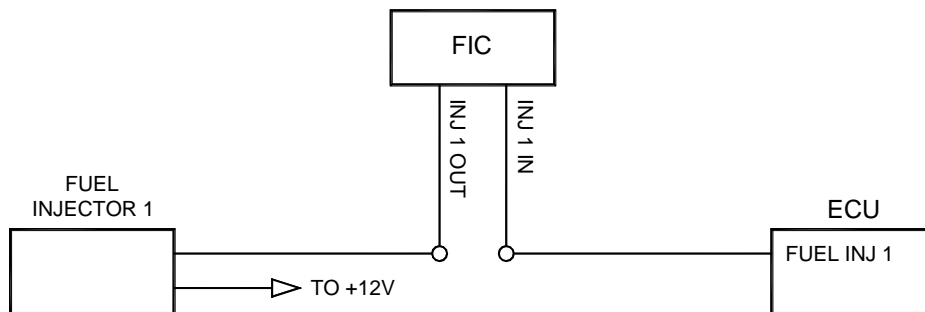
Figure 7. Analog A/B Connection

How many Injectors do you want to control with the F/IC?

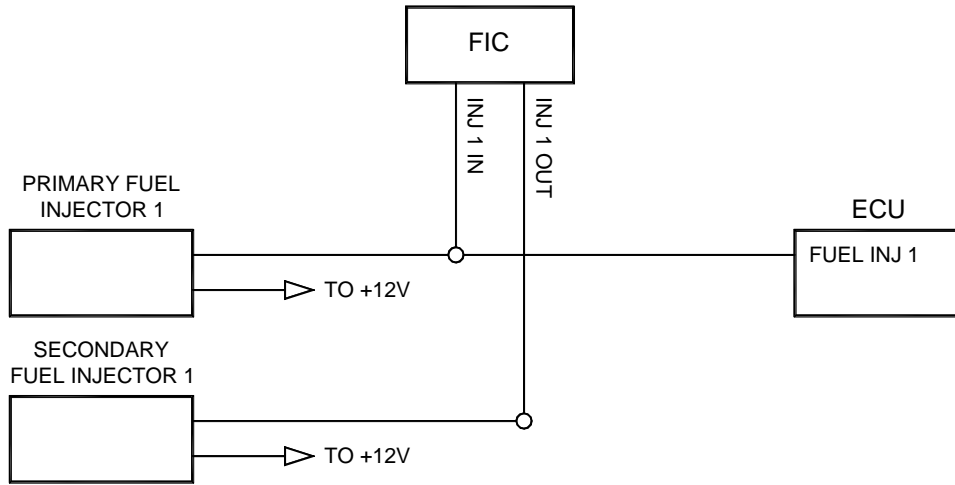
The F/IC has 8 Injector drivers. There are two wires per driver. The wires for the unused drivers can be eliminated.

Do you want to control the primary Injectors on the engine, or control additional secondary Injectors?

Connect the injectors as shown below in Figure 8.



PRIMARY FUEL INJECTOR CONNECTION

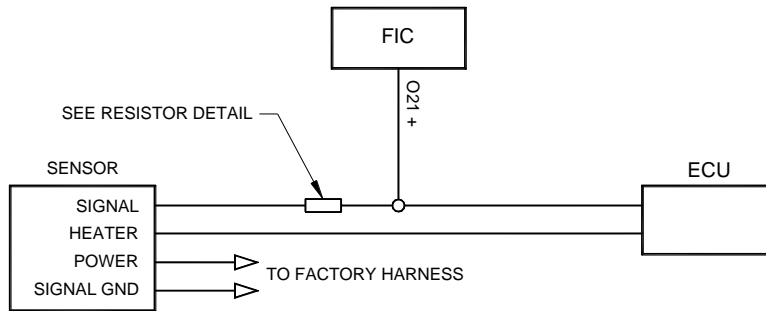


SECONDARY FUEL INJECTOR CONNECTION

Figure 8. Fuel Injector Connection

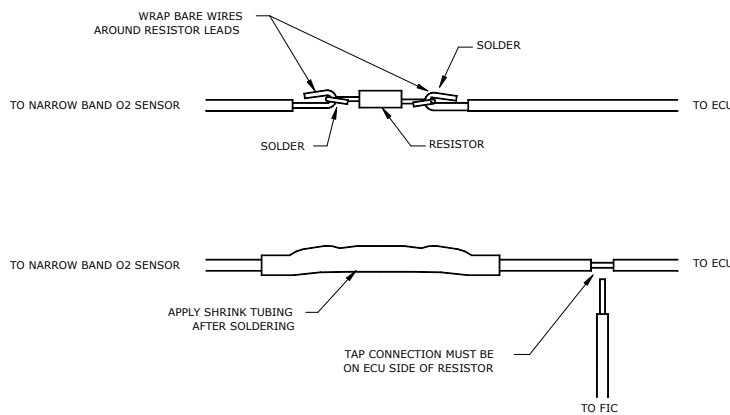
Do you want to modify the Oxygen(O2)/UEGO sensor signals?

If not, the "O2" sensor wires can be eliminated. If so, connect the sensors as shown below in Figure 9.



NARROW BAND O2 SENSOR CONNECTION

RESISTOR DETAIL



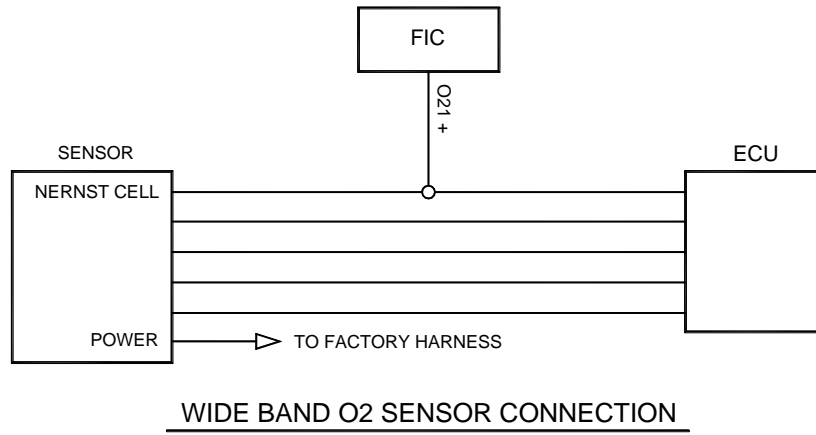


Figure 9. Oxygen/UEGO Sensor Connection

Connect the F/IC power wire. See Figure 10.

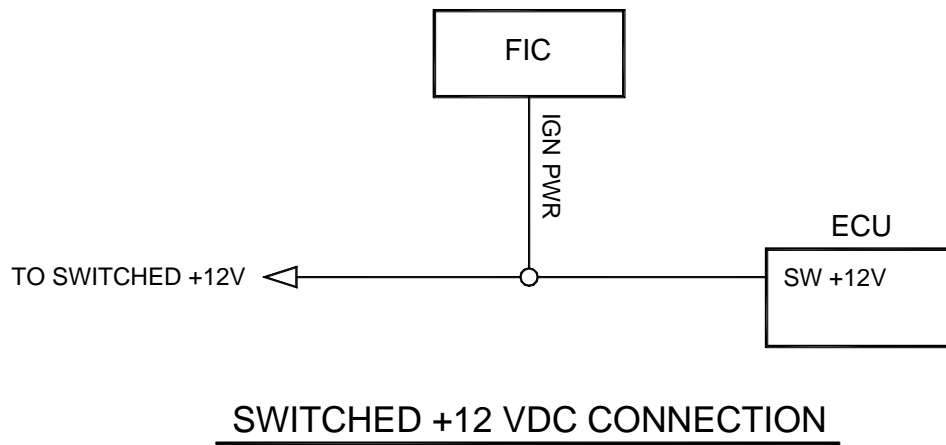


Figure 10. F/IC Power Connection

Connect the TPS signal to the F/IC. See Figure 11.

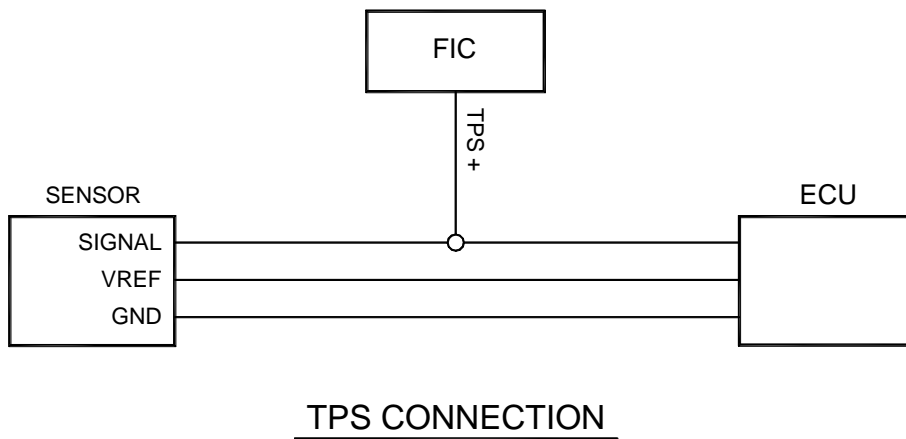


Figure 11. TPS Connection

Connect all three F/IC grounds. See Figure 12.

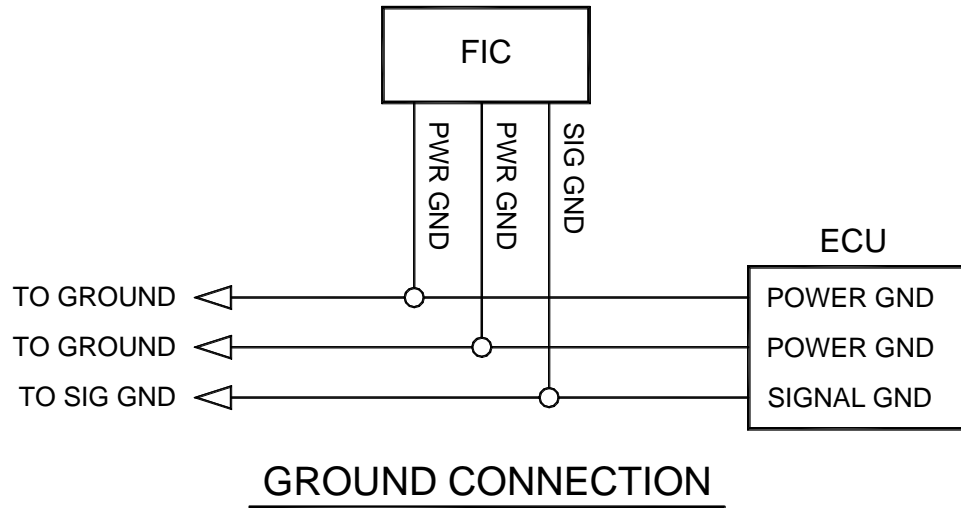
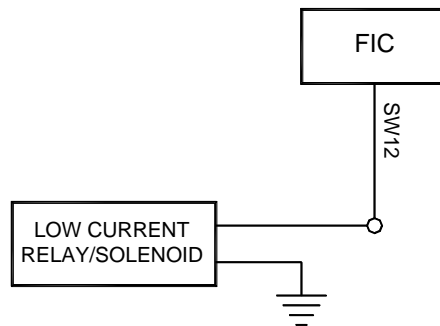


Figure 12. Power Ground Connections

Do you want to use the Switched 12 volt dc source from the F/IC?

If so, connect the "Switched 12 Volt" source wire as shown below. (Note: The driver can handle 1 amp Max.) See Figure 13.

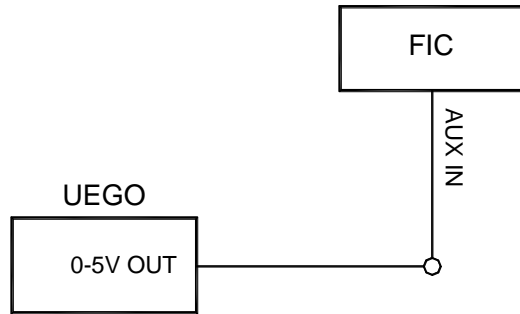


SWITCHED 12 VDC CONNECTION

Figure 13. Switched 12Vdc Connection

Do you want to use the Auxiliary Gauge in the F/IC?

If so, connect the “Auxiliary Input” as shown below. See Figure 4.

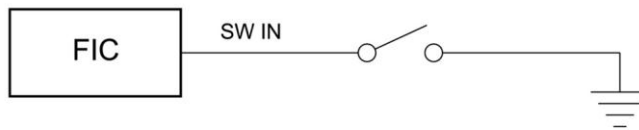


AUXILIARY GAUGE CONNECTION

Figure 14. Auxiliary Gauge Connection

Do you want to use the F/IC’s Internal Data Logger or the Dual Calibration mode?

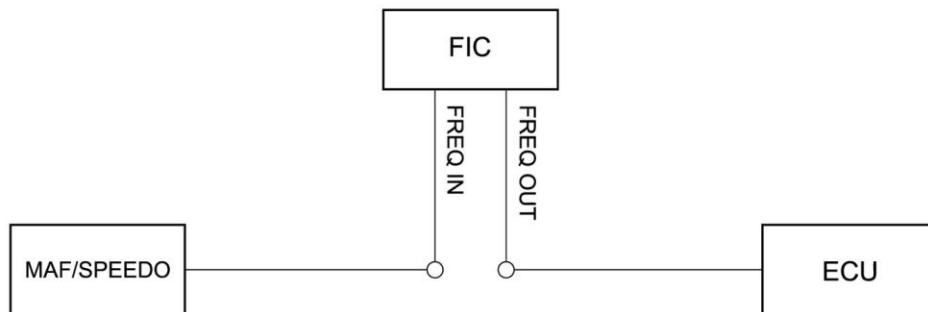
If so, connect the “Switch Input” as shown below in Figure 15.



USER SWITCH INPUT CONNECTION

Figure 15. Switch Input Connection

Do you have a frequency based MAF sensor (Karman Vortex or Delphi)? Or, do you want to recalibrate your speedometer? (Note: The frequency channel can do one or the other, not both.) Connect the frequency channels as shown below in Figure 16.

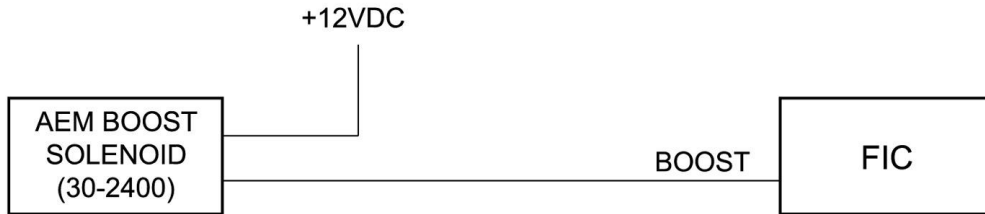


FREQUENCY CONNECTION

Figure 16. Frequency Channel Connection

Do you want to control the AEM boost solenoid with the FIC?

If so, connect the boost solenoid as shown below in Figure 17.

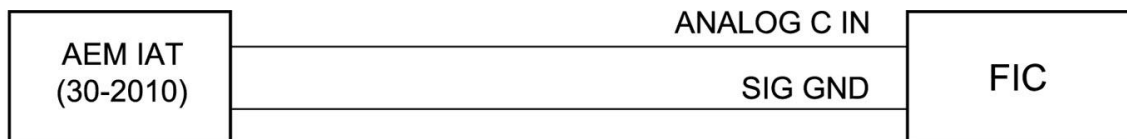


BOOST SOLENOID CONNECTION

Figure 17. Boost Solenoid Connection

Do you want to use the AEM Inlet Air Temperature sensor?

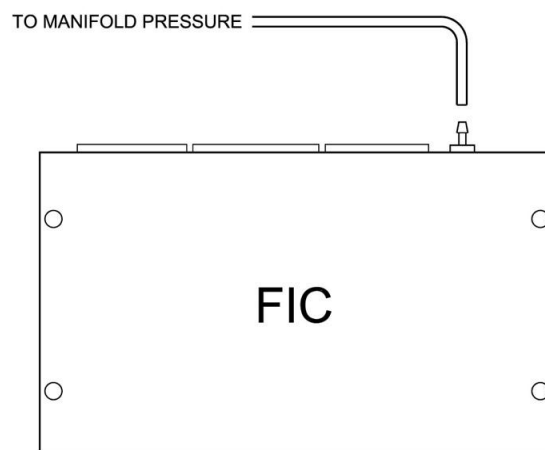
If so, connect the AEM IAT as shown below in Figure 18.



ANALOG C CONNECTION

Figure 18. Analog C connection

Connect the boost line to manifold pressure. See Figure 19.



BOOST LINE CONNECTION

Figure 19. Boost Connection

Connect the F/IC to the PC using the supplied USB cable. See Figure 20.

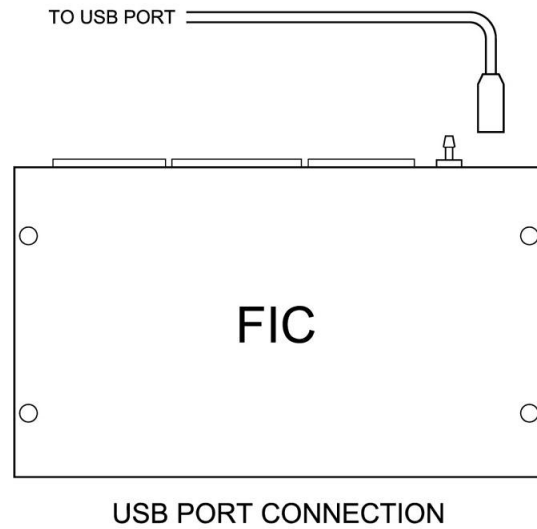


Figure 20. USB Com Cable Connection

Using the F/IC

The F/IC is a very unique product, capable of precise **F**uel and **I**gnition **C**ontrol. However, the F/IC, by design, is a “piggyback” engine controller, not a stand-alone ECU. Because it is a piggyback controller, the F/IC relies heavily on the factory ECU. As factory ECU’s get more and more complex, it is more difficult to sustain improved engine performance without the factory ECU “detuning” the engine. Thus, the key to using the F/IC is to make it work in harmony with the factory ECU.

Tuning Tips

- Tune the F/IC so the factory’s ECU’s closed-loop fuel trims are as close to zero as possible using the fuel maps. Change the factory ECU’s closed loop target AFR using the O2 table. Most factory ECU’s can sense extra fuel and will promptly adjust the fuel trims to remove the extra fuel. For easy reference, fuel trims can be monitored with an OBDII scanner or equivalent device. Positive fuel trims are reduced by adding fuel. Negative fuel trims are reduced by removing fuel.
- **Keep it simple.** Many times it is not necessary to use every function of the F/IC to obtain the desired engine performance. If the desired engine performance can be achieved by adjusting only two maps, use only the two maps. There is no benefit to adding fuel in one map and removing it in another.
- Be conservative when making changes. A small step in the wrong direction is less likely to damage an engine than a large step in the wrong direction.
- Use the Oxygen Sensor functions only when additional closed-loop fuel is needed.

Absolute Pressure Explained

(Note: The F/IC reads and displays absolute pressure. Please read the following section before tuning.)

When talking pressure, there are two common ways pressure is represented, Gauge, and Absolute, Gauge being by far the more common way. Take a tire for example, if the measuring gauge says 50 psi, we say the tire has 50 psi of air in it. However, that is not 100% correct. The tire actually has air at 50 psi above atmospheric pressure, which is known as psi gauge (psig). The total pressure, or absolute pressure (psia) is actually 50 psi on the gauge plus the atmospheric pressure. So, the absolute pressure is the gauge pressure plus the atmospheric pressure. What about boost gauges? Most boost gauges display gauge pressure both above and below atmospheric pressure. Pressure above atmospheric pressure is commonly referred to as "Boost" pressure. Pressure below atmospheric is commonly referred to as "Vacuum". So why the lesson on absolute pressure? **BECAUSE THE F/IC READS AND DISPLAYS ABSOLUTE PRESSURE!!!** For easy reference, the following formulas can be used to determine, "Boost" and "Vacuum" pressures. Atmospheric pressure can be determined by reading the F/IC pressure with the key on and the engine off.

$$P_{(boost)} = P_{(F/IC)} - P_{(atmospheric)}$$

$$P_{(vacuum)} = P_{(atmospheric)} - P_{(F/IC)}$$

Now that you're starting to grasp absolute pressure, you might wonder why the F/IC reads absolute pressure. Well, absolute pressure is the only accurate, repeatable way to measure manifold pressure. Measuring only "Boost" pressure does not account for changes in atmospheric pressure. Changes in atmospheric pressure will cause changes in manifold pressure. For example, let's consider a boost gauge at high elevation, where atmospheric pressure is 12.7 psia. A boost gauge reading of 10 psi will give an absolute pressure of 22.7 psia (12.7 + 10). Now, take the same boost gauge at sea level, where atmospheric pressure is 14.7 psia. A boost gauge reading of 10 psi now gives an absolute pressure of 24.7 psia (10 + 14.7). The boost gauge displayed 10 psi boost in both locations, however, the absolute pressure was two psi greater at sea level. By measuring absolute pressure, instead of gauge pressure, the F/IC can be tuned correctly for all operating conditions.

Loading the FIC software

Insert the supplied software disk into your CD drive. The disk should automatically load. To manually load the software, double click the file "FIC8Releasexxxxxx.exe". Follow the on-screen dialogue to finish the install. Load the USB drivers by double clicking on the file "CDM x.xx.xx.exe" (C:\Program Files\AEM\FIC). Latest software versions can be found on the Electronics Forums at <http://www.aempower.com/>.

Opening a Calibration

(Note: Changes made to FIC calibrations are made real-time and are autosaved on the calibration that is currently open. If you do not want to modify a file, it is recommended that you save the file under a different name using the "Save As" function.) Start the FIC software by double clicking on the "AEM FIC" icon on your desktop. Go to File>Open and locate the file "Base Cal.fi8". If the default file locations were used to load the software, the "Base Cal.fi8" file should be found in the FIC folder C:\Program files\AEM\FIC\. See Figure 21.

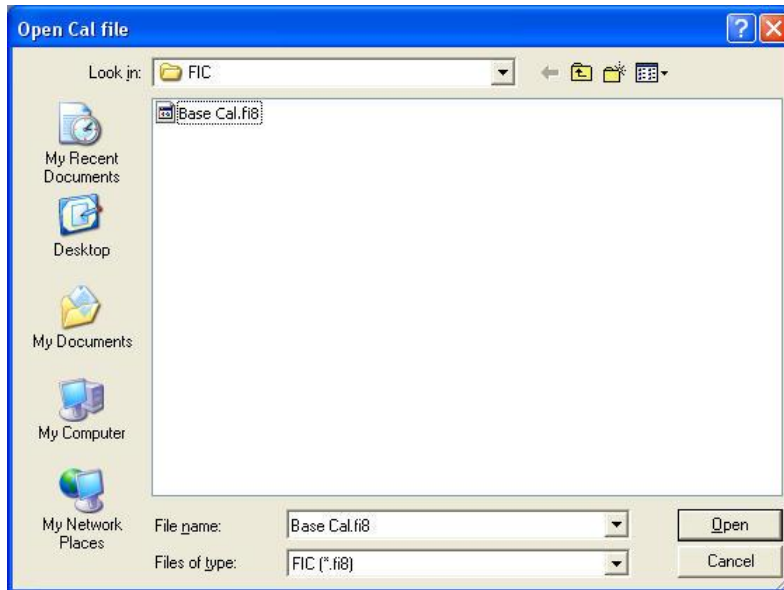


Figure 21. Open File

Saving a Calibration under a different name

With a Calibration open, go to File>Save-As. Select a file name and location to save the file in the “Save As” pop-up window. See Figure 22.

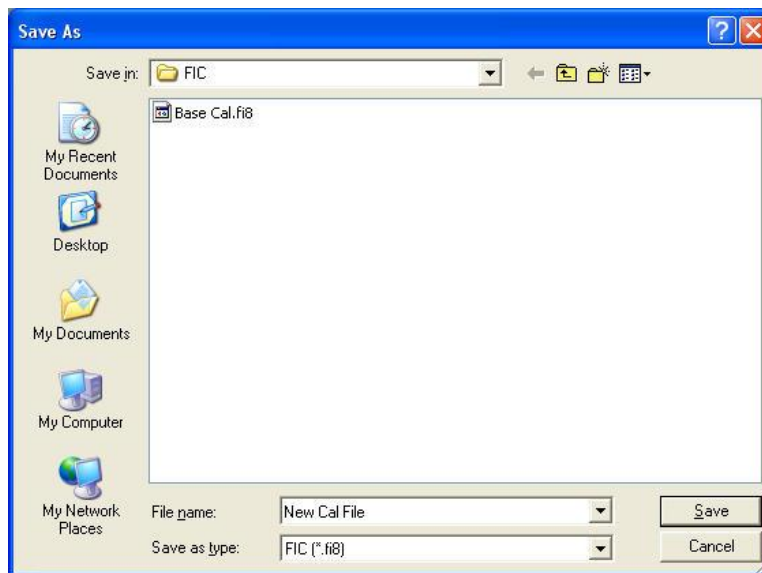


Figure 22. File Save As

Editing a Calibration

The FIC has 8 user configurable maps. Each map is 21X17 and has user configurable Load and RPM Breakpoints. The map cells have a white background, while the Load and RPM Breakpoints have a gray background. See Figure 23.

Fuel Map, MAP load									
	0	700	900	1200	1600	2000	2400	2800	3200
200	-3.9	-3.9	-3.9	-3.9	-3.9	-3.9	-3.9	-3.9	-3.9
175	-7.8	-7.8	-7.8	-7.8	-7.8	-7.8	-7.8	-7.8	-7.8
150	-10.9	-10.9	-10.9	-10.9	-10.9	-10.9	-10.9	-10.9	-10.9
125	-14.1	-14.1	-14.1	-14.1	-14.1	-14.1	-14.1	-14.1	-14.1

Figure 23. Map Cells and Breakpoints

To edit Breakpoints, double click on a breakpoint. The background for the breakpoints will change from gray to white, signifying that the breakpoints can now be edited. See Figure 24.

Fuel Map, MAP load									
	0	700	900	1200	1600	2000	2400	2800	3200
200	-3.9	-3.9	-3.9	-3.9	-3.9	-3.9	-3.9	-3.9	-3.9
175	-7.8	-7.8	-7.8	-7.8	-7.8	-7.8	-7.8	-7.8	-7.8
150	-10.9	-10.9	-10.9	-10.9	-10.9	-10.9	-10.9	-10.9	-10.9
125	-14.1	-14.1	-14.1	-14.1	-14.1	-14.1	-14.1	-14.1	-14.1

Figure 24. Editing Breakpoints

To change the value of a Breakpoint, select the breakpoint and type in the new value. Breakpoints can be selected using the arrow keys or the mouse. To linearly interpolate between breakpoints, highlight the desired breakpoints by using the left mouse button. After the Breakpoints have been selected, right click the mouse and select "Calculate" on the pop-up menu. The software will linearly interpolate all breakpoints between the left most and right most rpm breakpoints. When calculating load breakpoints, the software will interpolate between the upper most and lower most breakpoints. To change single cell values, select a cell using the arrow keys or mouse and type a new value. To change multiple cell values simultaneously, highlight the desired cells and right click the mouse. Select either "Set value" or "Change value". "Set value" is used to give the same values to multiple cells. "Change value" is used to change multiple cells by the same percentage.

The following shortcuts can be used when using the F/IC software.

- CTRL-A = Select All
- CTRL-C = Copy to Clipboard
- CTRL-D = Value-Down
- CTRL-E = Show Aux Gauge Setup screen
- CTRL-F = Show both Fuel Map screens
- CTRL-G = Show Real-time Gauge screen
- CTRL-I = Show Ignition Map screen
- CTRL-J = Show Analog-A map screen
- CTRL-K = Show Analog-B map screen

- CTRL-M = Show MAF map screen
- CTRL-O = Show O2 map screen
- CTRL-S = Show Setup screen
- CTRL-U = Value-up
- CTRL-V = Paste from clip board
- CTRL-X = Show value-change pop-up menu
- CTRL-Y = Redo
- CTRL-Z = Undo

Fuel Map, MAP Load (See Figure 25.)

The MAP based “Fuel Map” uses the onboard map sensor for its load input. Fuel can be added or removed from the engine based on engine speed and manifold pressure. With a value of 12% in any of the cells, the F/IC will hold the injector open for 12% longer than the factory fuel pulse. With a value of -18% in any of the cells, the F/IC will hold the injector open for 18% less time than the factory fuel pulse. A value of 0 will not alter the fuel pulse length from the factory ECU.

The “Fuel Map” also has a couple unique features that allow for easy setup of a basic calibration file. The “Injector size change” and “Create base fuel map” functions reduce the amount of time required to configure a map when starting from scratch. The “Injector size change function” is used to rescale the fuel map when changing injector size. Right click on the “Fuel Map” and select “Injector size change”. Enter the new and old injector sizes and click ok. The “Fuel Map” will automatically rescale for the new injector size. To create a base map, right click on the “Fuel Map” and select “Create base fuel map”. Enter the “New injector size,” if changed, the “Old injector size”, the “Maximum RPM”, and the “Maximum Boost” (must be absolute pressure) and click OK. (Note: Final tuning is required after using the “Create base fuel map” function.)

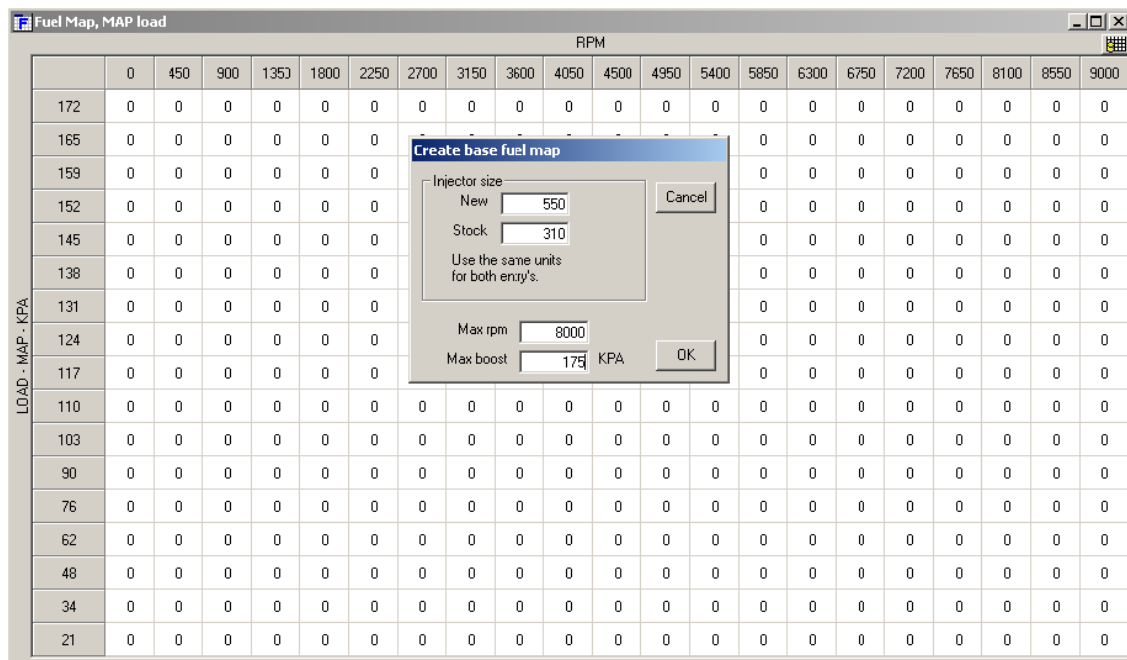


Figure 25. MAP Sensor Based Fuel Map

Ignition map (See Figure 26.)

The “Ignition Map” is used to Retard Ignition Timing. The load input for the “Ignition Map” is based on either MAP, MAF, or TPS. Timing will be removed from the engine based on the selected load input and engine speed. Since timing can only be removed (retard) from the engine, the “Ignition Map” **only** accepts negative numbers. For example, a value of -4 will retard the timing 4 degrees. The load input for the “Ignition Map” is selected from the “Setup” window. Go to setup>system and the “Setup” window will appear. In the “Ignition” section, select the desired load input from the drop down menu.

Similar to the “Fuel Map”, the FIC software will also create a base “Ignition Map”. Right click on the “Ignition Map” and select “Create base ignition map”. Enter the “Maximum rpm”, “Maximum boost” (must be absolute pressure), the desired “Timing retard per unit of Boost”, and click OK. (Note: As with the “Fuel Map”, final tuning is required after using the “Create base ignition map” function.)

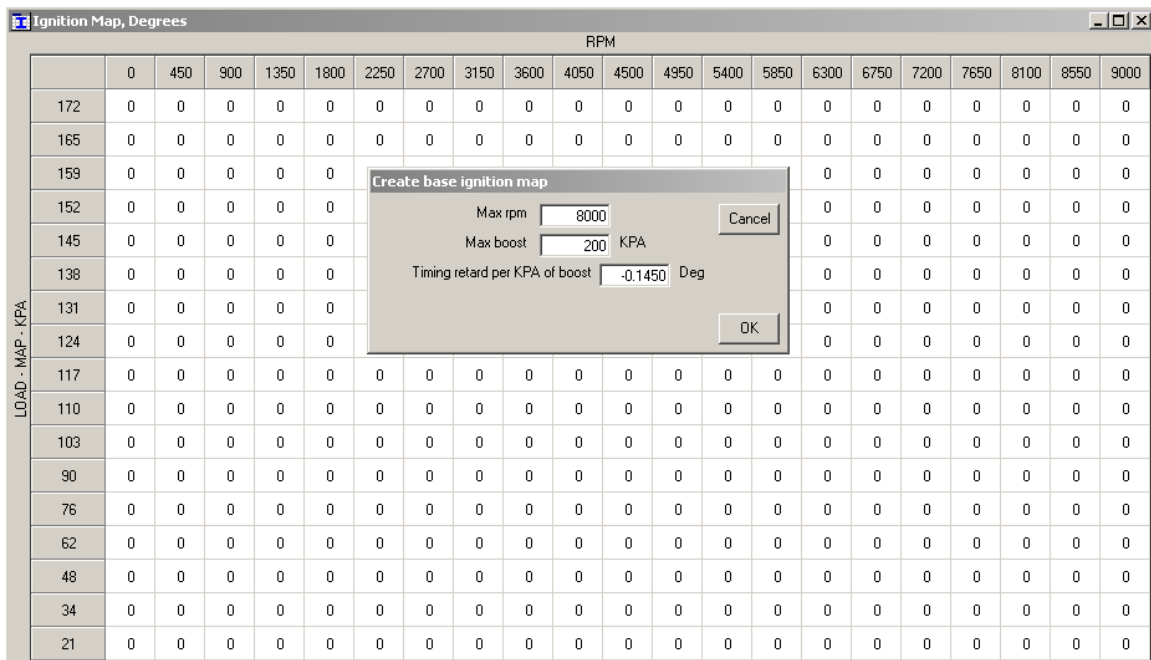


Figure 26. Ignition Map

Analog A(B) Map (See Figure 27.)

The Analog A(B) map is used to alter the Analog A(B) signal to the factory ECU. The Analog A(B) map load is based on either MAP, MAF, TPS, or the Analog A(B) input voltage. The load input is selected from the “Analog A(B)” section of the “Setup” window. The Analog A(B) map has three different operating modes, Percent, Offset, and Voltage. The mode is also selected in the “Analog A(B)” section of the “Setup” window.

- “Percent” mode - The F/IC will measure the input voltage on the Analog A(B) input wire and modify the output voltage by the value in the Analog A(B) map. For an input voltage of 1 volt, a cell value of 6, the output voltage will be 1.06 volts.
- “Voltage” mode - The F/IC will output the voltage value that is in the “MAF Map”. For example, the F/IC will output 2.5 volts for a value of 2.5 in the Analog A(B) map.
- “Offset” mode - The F/IC will measure in the input voltage on the Analog A(B) in wire and offset the voltage by the number in the Analog A(B) map. For an input voltage of 1.5 volts and a cell value of .25, the F/IC will output 1.75 volts.

	RPM																				
	0	425	850	1275	1700	2125	2550	2975	3400	3825	4250	4675	5100	5525	5950	6375	6800	7225	7650	8075	8500
240	5.01	5.01	5.01	5.01	5.01	5.01	5.01	5.01	5.01	5.01	5.01	5.01	5.01	5.01	5.01	5.01	5.01	5.01	5.01	5.01	5.01
225	4.7	4.7	4.7	4.7	4.7	4.7	4.7	4.7	4.7	4.7	4.7	4.7	4.7	4.7	4.7	4.7	4.7	4.7	4.7	4.7	4.7
210	4.37	4.37	4.37	4.37	4.37	4.37	4.37	4.37	4.37	4.37	4.37	4.37	4.37	4.37	4.37	4.37	4.37	4.37	4.37	4.37	4.37
195	4.07	4.07	4.07	4.07	4.07	4.07	4.07	4.07	4.07	4.07	4.07	4.07	4.07	4.07	4.07	4.07	4.07	4.07	4.07	4.07	4.07
180	3.77	3.77	3.77	3.77	3.77	3.77	3.77	3.77	3.77	3.77	3.77	3.77	3.77	3.77	3.77	3.77	3.77	3.77	3.77	3.77	3.77
165	3.44	3.44	3.44	3.44	3.44	3.44	3.44	3.44	3.44	3.44	3.44	3.44	3.44	3.44	3.44	3.44	3.44	3.44	3.44	3.44	3.44
130	3.13	3.13	3.13	3.13	3.13	3.13	3.13	3.13	3.13	3.13	3.13	3.13	3.13	3.13	3.13	3.13	3.13	3.13	3.13	3.13	3.13
115	2.81	2.81	2.81	2.81	2.81	2.81	2.81	2.81	2.81	2.81	2.81	2.81	2.81	2.81	2.81	2.81	2.81	2.81	2.81	2.81	2.81
102	2.5	2.5	2.5	2.5	2.5	2.5	2.5	2.5	2.5	2.5	2.5	2.5	2.5	2.5	2.5	2.5	2.5	2.5	2.5	2.5	2.5
90	2.2	2.2	2.2	2.2	2.2	2.2	2.2	2.2	2.2	2.2	2.2	2.2	2.2	2.2	2.2	2.2	2.2	2.2	2.2	2.2	2.2
80	1.87	1.87	1.87	1.87	1.87	1.87	1.87	1.87	1.87	1.87	1.87	1.87	1.87	1.87	1.87	1.87	1.87	1.87	1.87	1.87	1.87
70	1.57	1.57	1.57	1.57	1.57	1.57	1.57	1.57	1.57	1.57	1.57	1.57	1.57	1.57	1.57	1.57	1.57	1.57	1.57	1.57	1.57
60	1.26	1.26	1.26	1.26	1.26	1.26	1.26	1.26	1.26	1.26	1.26	1.26	1.26	1.26	1.26	1.26	1.26	1.26	1.26	1.26	1.26
50	0.94	0.94	0.94	0.94	0.94	0.94	0.94	0.94	0.94	0.94	0.94	0.94	0.94	0.94	0.94	0.94	0.94	0.94	0.94	0.94	0.94
40	0.63	0.63	0.63	0.63	0.63	0.63	0.63	0.63	0.63	0.63	0.63	0.63	0.63	0.63	0.63	0.63	0.63	0.63	0.63	0.63	0.63
30	0.3	0.3	0.3	0.3	0.3	0.3	0.3	0.3	0.3	0.3	0.3	0.3	0.3	0.3	0.3	0.3	0.3	0.3	0.3	0.3	0.3
20	0	0	0	0	0	0	0	0	0	0	0	0	0	0	0	0	0	0	0	0	0

Figure 27. Analog A/B Map

O2 Map (See Figure 28.)

At times, such as a track day or race event, you may desire to alter the closed-loop air fuel ratio (AFR) of the factory ECU to achieve better engine performance. This can be done using the O2 functionality of the F/IC. By outputting a different signal, the F/IC can alter the target AFR of the factory ECU. The O2 map “Load Input” can be based on MAP, MAF, TPS, or O2 sensors. The “O2 Map” also has four different operating modes, Fixed, Percent, Offset, and Voltage. The load inputs and modes are selected in the “O2” section of the “Setup” window.

- “Voltage” mode - The F/IC outputs a voltage, which is determined by the corresponding cells in the “O2 Map”. In the “Voltage” mode, for an “O2 Map” cell value of 2.5, the F/IC will output 2.5 volts. In “Voltage” mode, a cell value of 0 makes no change, NOT an output voltage of 0 volts.
- “Fixed” mode - The F/IC outputs a square wave that alternates between the Bank Hi voltage and the Bank Lo voltage. The Bank Hi voltage, Bank Lo voltage, and square wave period are set in the O2 section of the setup window. The pulse width is determined by the cell value in the “O2 Map”. For a Bank Hi of 2, and

Bank Lo of 1, a period of 200 ms, and a cell value of 50, the F/IC will output 2 volts for 50 ms, 1 volt for 150ms, 2 volts for 50 ms, etc.

- “Percent” mode - The F/IC will measure the O2 voltage, then modify it by the percentage value in the “O2 Map”. For a measured value of 1 volt, a period of 200ms, and a cell value of 20, the F/IC will measure 1 volt for 5ms, then output 1.2 volts for 195ms, then measure again for 5ms, etc.
- “Offset” mode - The F/IC will measure the O2 voltage, and then modify it by the offset value in the O2 map. For a measured value of .7 volts, a period of 200ms, and a cell value of -.25, the F/IC will measure 0.7volts for 5ms, then output 0.45 volts for 195ms, then measure again for 5ms, etc

		RPM																				
		0	350	700	1050	1400	1750	2100	2450	2800	3150	3500	3850	4200	4550	4900	5250	5600	5950	6300	6650	7000
LOAD - MAP - KPA	200	3.22	1.11	1.11	1.11	1.11	1.11	1.11	1.11	1.11	1.11	1.11	1.11	1.11	1.11	1.11	1.11	1.11	1.11	1.11	1.11	1.11
	175	3.22	1.11	1.11	1.11	1.11	1.11	1.11	1.11	1.11	1.11	1.11	1.11	1.11	1.11	1.11	1.11	1.11	1.11	1.11	1.11	1.11
	150	3.22	1.11	1.11	1.11	1.11	1.11	1.11	1.11	1.11	1.11	1.11	1.11	1.11	1.11	1.11	1.11	1.11	1.11	1.11	1.11	1.11
	125	3.22	1.11	1.11	1.11	1.11	1.11	1.11	1.11	1.11	1.11	1.11	1.11	1.11	1.11	1.11	1.11	1.11	1.11	1.11	1.11	1.11
	100	3.22	1.11	1.11	1.11	1.11	1.11	1.11	1.11	1.11	1.11	1.11	1.11	1.11	1.11	1.11	1.11	1.11	1.11	1.11	1.11	1.11
	95	3.22	1.11	1.11	1.11	1.11	1.11	1.11	1.11	1.11	1.11	1.11	1.11	1.11	1.11	1.11	1.11	1.11	1.11	1.11	1.11	1.11
	85	3.22	1.36	1.36	1.36	1.36	1.36	1.36	1.36	1.36	1.36	1.36	1.36	1.36	1.36	1.36	1.36	1.36	1.36	1.36	1.36	1.36
	75	3.22	1.67	1.67	1.67	1.67	1.67	1.67	1.67	1.67	1.67	1.67	1.67	1.67	1.67	1.67	1.67	1.67	1.67	1.67	1.67	1.67
	65	3.22	1.94	1.94	1.94	1.94	1.94	1.94	1.94	1.94	1.94	1.94	1.94	1.94	1.94	1.94	1.94	1.94	1.94	1.94	1.94	1.94
	55	3.22	2.19	2.19	2.19	2.19	2.19	2.19	2.19	2.19	2.19	2.19	2.19	2.19	2.19	2.19	2.19	2.19	2.19	2.19	2.19	2.19
	50	0	0	0	0	0	0	0	0	0	0	0	0	0	0	0	0	0	0	0	0	0
	45	0	0	0	0	0	0	0	0	0	0	0	0	0	0	0	0	0	0	0	0	0
	40	0	0	0	0	0	0	0	0	0	0	0	0	0	0	0	0	0	0	0	0	0
	35	0	0	0	0	0	0	0	0	0	0	0	0	0	0	0	0	0	0	0	0	0
	30	0	0	0	0	0	0	0	0	0	0	0	0	0	0	0	0	0	0	0	0	0
	25	0	0	0	0	0	0	0	0	0	0	0	0	0	0	0	0	0	0	0	0	0
	20	0	0	0	0	0	0	0	0	0	0	0	0	0	0	0	0	0	0	0	0	0

Figure 28. O2 Map

Viewing the O2 Map as AFR (See Figure 29.)

In the “Voltage and “Offset” modes, the software can be configured to view the “O2 Map” as AFR values rather than voltage values. To display the “O2 Map” as AFR values, the “View as AFR” checkbox must be checked, and the “AFR to Voltage Table” must be configured. The “View as AFR” checkbox is located in the “O2” section of the “Setup” window, see Figure 28. To open the “AFR to voltage Table”, click on the AFR table icon next to the “View as AFR” checkbox. The “AFR to Voltage Table” contains two columns and 20 rows, see Figure 27. When completing the “Volts out” column, the lowest voltage must be in the top row, while the largest voltage value must go in the bottom row. In the “AFR” column, enter the corresponding AFR for each voltage output. Once the “AFR to Voltage Table” is complete, AFR values can be entered into the O2 map. For a given cell value in the O2 map, the FIC will take the value from the O2 map and look at the “AFR to Voltage Table”. The FIC will then output the corresponding voltage value.

Volts out	AFR
1	11.9
1.2	12.1
1.4	12.3
1.6	12.45
1.8	12.6
2	12.8
2.2	13
2.4	13.2
2.6	13.5
2.8	13.8
2.9	14
3	14.2
3.1	14.4
3.2	14.7
3.3	14.9
3.4	15.2
3.5	15.5
3.6	15.8
3.8	16.6
4	17.4

Figure 29. AFR to Voltage Table.

Frequency Map (See Figure 30.)

The Frequency Map is used to output a frequency signal from the FIC to the factory ECU. The frequency functionality is intended for vehicles with frequency based MAF sensors, such as Karman Vortex or GM Delphi. Using the Frequency Map, the FIC can mimic, alter, or clamp the input frequency signal. The load input, operating mode, frequency range, clamp high and low values for the Frequency Map are selected from the “Frequency” section of the “Setup” window. Three different operating modes are available, Percent, Frequency, and Offset frequency.

With the frequency range of 250Hz – 13 KHz selected

- “Percent” mode - With a cell value of 20 and an input frequency of 1 KHz, the FIC will output 1,200 Hz.
- “Frequency” mode - With a cell value of 11,000, the FIC will output 11 KHz.
- “Offset frequency” mode - With a cell value of -1000 and an input frequency of 10 KHz, the FIC will output 9 KHz.

Frequency Map, Frequency		RPM																				
		0	350	700	1050	1400	1750	2100	2450	2800	3150	3500	3850	4200	4550	4900	5250	5600	5950	6300	6650	7000
LOAD - Frequency - Hz	12750	12750	12750	12750	12750	12750	12750	12750	12750	12750	12750	12750	12750	12750	12750	12750	12750	12750	12750	12750	12750	12750
	12016	12000	12000	12000	12000	12000	12000	12000	12000	12000	12000	12000	12000	12000	12000	12000	12000	12000	12000	12000	12000	12000
	11281	11300	11300	11300	11300	11300	11300	11300	11300	11300	11300	11300	11300	11300	11300	11300	11300	11300	11300	11300	11300	11300
	10547	10550	10550	10550	10550	10550	10550	10550	10550	10550	10550	10550	10550	10550	10550	10550	10550	10550	10550	10550	10550	10550
	9813	9800	9800	9800	9800	9800	9800	9800	9800	9800	9800	9800	9800	9800	9800	9800	9800	9800	9800	9800	9800	9800
	9078	9100	9100	9100	9100	9100	9100	9100	9100	9100	9100	9100	9100	9100	9100	9100	9100	9100	9100	9100	9100	9100
	8344	8350	8350	8350	8350	8350	8350	8350	8350	8350	8350	8350	8350	8350	8350	8350	8350	8350	8350	8350	8350	8350
	7609	7600	7600	7600	7600	7600	7600	7600	7600	7600	7600	7600	7600	7600	7600	7600	7600	7600	7600	7600	7600	7600
	6875	6900	6900	6900	6900	6900	6900	6900	6900	6900	6900	6900	6900	6900	6900	6900	6900	6900	6900	6900	6900	6900
	6141	6150	6150	6150	6150	6150	6150	6150	6150	6150	6150	6150	6150	6150	6150	6150	6150	6150	6150	6150	6150	6150
	5406	5400	5400	5400	5400	5400	5400	5400	5400	5400	5400	5400	5400	5400	5400	5400	5400	5400	5400	5400	5400	5400
	4672	4650	4650	4650	4650	4650	4650	4650	4650	4650	4650	4650	4650	4650	4650	4650	4650	4650	4650	4650	4650	4650
	3938	3950	3950	3950	3950	3950	3950	3950	3950	3950	3950	3950	3950	3950	3950	3950	3950	3950	3950	3950	3950	3950
	3203	3200	3200	3200	3200	3200	3200	3200	3200	3200	3200	3200	3200	3200	3200	3200	3200	3200	3200	3200	3200	3200
	2469	2450	2450	2450	2450	2450	2450	2450	2450	2450	2450	2450	2450	2450	2450	2450	2450	2450	2450	2450	2450	2450
	1734	1750	1750	1750	1750	1750	1750	1750	1750	1750	1750	1750	1750	1750	1750	1750	1750	1750	1750	1750	1750	1750
1000	1000	1000	1000	1000	1000	1000	1000	1000	1000	1000	1000	1000	1000	1000	1000	1000	1000	1000	1000	1000	1000	

Figure 30. Frequency Map

Boost Map (See Figure 31)

The FIC8 has a pulse width modulated output that will drive the AEM boost solenoid (P/N 30-2400) at varying duty cycles based on the Boost Map. The values entered into the Boost Map are duty cycle values between 0 and 100%. The Boost Map load input can be based on TPS, Analog C, or RPM. When RPM is selected, the Boost Map has no load input. For a cell value of 30, the FIC outputs a signal at 30% duty cycle. (Note: The solenoid output is 0% duty cycle for boost pressure less than 1psi above atmospheric pressure.)

To aid in tuning, the FIC software has user configurable boost solenoid “Start Pressure” and “Over-boost protection”. Both functions are configured in the “Boost” section of the “Setup” window, see Figure 32. The FIC outputs a 100% duty cycle from 1psi above atmospheric pressure until the “Start Pressure” is reached. The FIC will output the duty cycle values in the Boost Map for pressures greater than the “Start Pressure” value. The “Start Pressure” value can be adjusted to minimize turbo lag.

Over-boost protection is enabled and disabled with the enable check box in the “Over-boost protection” section of the “Setup” window, see Figure 32. The over-boost conditions are also set in the “Over-boost protection” section.

The “Gauges” window contains an “Overboost” warning light and a boost valve error (Boost valve ERR) light. The “Overboost” light will illuminate when the overboost conditions in the “Setup” window have been met. The “Boost valve ERR” light will illuminate when the boost solenoid is disconnected or shorted.

Boost Map, PWM %		RPM																					
		0	350	700	1050	1400	1750	2100	2450	2800	3150	3500	3850	4200	4550	4900	5250	5600	5950	6300	6650	7000	
LOAD - TPS - %	100	34.9	34.9	34.9	38.4	41.6	45.1	48.2	51.8	54.9	58.4	61.6	65.1	65.1	65.1	65.1	65.1	65.1	65.1	65.1	65.1	65.1	
	93.8	34.9	34.9	34.9	38.4	41.6	45.1	48.2	51.8	54.9	58.4	61.6	65.1	65.1	65.1	65.1	65.1	65.1	65.1	65.1	65.1	65.1	
	87.5	34.9	34.9	34.9	38.4	41.6	45.1	48.2	51.8	54.9	58.4	61.6	65.1	65.1	65.1	65.1	65.1	65.1	65.1	65.1	65.1	65.1	
	81.3	34.9	34.9	34.9	38.4	41.6	45.1	48.2	51.8	54.9	58.4	61.6	65.1	65.1	65.1	65.1	65.1	65.1	65.1	65.1	65.1	65.1	
	75	34.9	34.9	34.9	38.4	41.6	45.1	48.2	51.8	54.9	58.4	61.6	65.1	65.1	65.1	65.1	65.1	65.1	65.1	65.1	65.1	65.1	
	68.8	34.9	34.9	34.9	38.4	41.6	45.1	48.2	51.8	54.9	58.4	61.6	65.1	65.1	65.1	65.1	65.1	65.1	65.1	65.1	65.1	65.1	65.1
	62.5	34.9	34.9	34.9	38.4	41.6	45.1	48.2	51.8	52.9	53.7	54.9	56.1	56.9	58	58.8	60	61.2	62	63.1	63.9	65.1	65.1
	56.3	34.9	37.3	39.6	42	44.3	46.7	49	51.4	52.5	53.3	54.1	54.9	56.1	56.9	57.6	58.4	59.2	60.4	61.2	62	62.7	62.7
	50	34.9	37.3	39.6	42	44.3	46.7	48.6	51	51.8	52.5	53.3	54.1	54.9	55.7	56.5	57.3	57.6	58.4	59.2	60	60.8	60.8
	43.8	34.9	37.3	39.6	41.6	43.9	46.3	48.6	51	51.4	52.2	52.5	53.3	53.7	54.5	54.9	55.7	56.1	56.9	57.3	58	58.4	58.4
	37.5	34.9	37.3	39.2	41.6	43.9	46.3	48.2	50.6	51	51.4	52.2	52.5	52.9	53.3	53.7	54.1	54.5	54.9	55.3	56.1	56.5	56.5
	31.3	34.9	37.3	39.2	41.6	43.5	45.9	48.2	50.2	50.6	51	51.4	51.4	51.8	52.2	52.5	52.9	53.3	53.7	53.7	54.1	54.1	54.1
	25	34.9	37.3	39.2	41.6	43.5	45.9	47.8	50.2	50.2	50.2	50.6	50.6	51	51	51	51.4	51.4	51.4	51.8	51.8	52.2	52.2
	18.8	34.9	36.9	39.2	41.2	43.5	45.5	47.8	49.8	49.8	49.8	49.8	49.8	49.8	49.8	49.8	49.8	49.8	49.8	49.8	49.8	49.8	49.8
	12.5	0	0	0	0	0	0	0	0	0	0	0	0	0	0	0	0	0	0	0	0	0	0
	6.3	0	0	0	0	0	0	0	0	0	0	0	0	0	0	0	0	0	0	0	0	0	0
	0	0	0	0	0	0	0	0	0	0	0	0	0	0	0	0	0	0	0	0	0	0	0

Figure 31. Boost Map

Using Passwords

The FIC has user selectable password capabilities. To add a password to a non password file, click File>Change Cal-File PIN and follow the on-screen instructions. When prompted, enter the new PIN. PIN's are case sensitive. When opening an existing file with a PIN, the software will prompt the user to enter the PIN before fully opening the file. An error window will appear if an incorrect PIN is entered.

To change a password file to a non password file, follow the procedure described for changing a password. When prompted to enter the new PIN, enter 12345678. A password will not be required the next time the file is opened.

When connecting the FIC to the PC, the FIC will connect as normal if both the calibration and password on the PC match the calibration and password in the FIC. If there is a mismatch of passwords and or calibrations between the PC and FIC, a pop-up window will appear, explaining the available options. Remember, there is NO undo function for copying cal files. If you don't know what to do, select cancel.

Configuring the FIC

With the FIC software open, select Setup>System. See Figure 32.

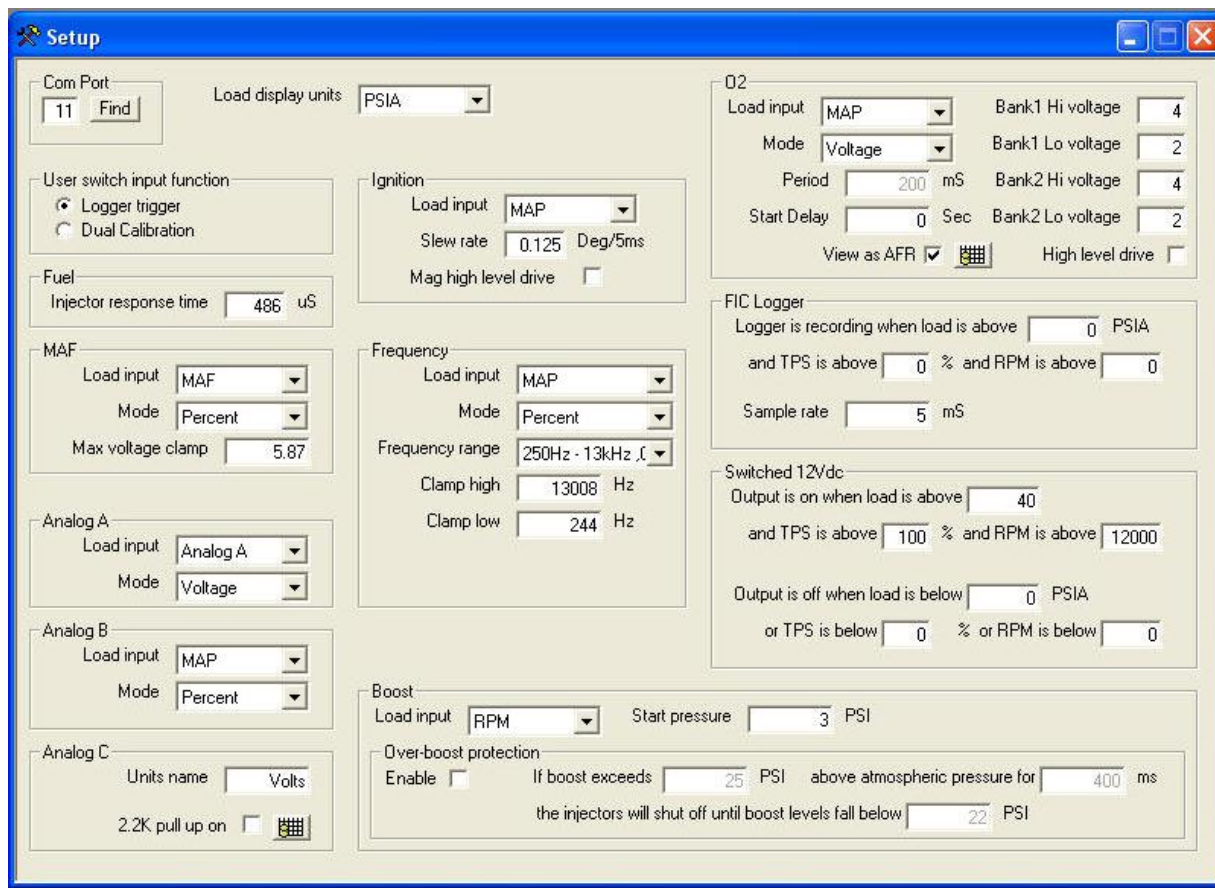


Figure 32. F/IC Setup Window

Com Port:

Displays the com port to which the F/IC is connected. This value will automatically be entered once the F/IC is connected to the computer.

Load Display Units:

The on board map sensor reads load in absolute pressure. The load can be displayed in PSI absolute or KPA absolute.

User Switch Input Function:

Select the functionality for the User Switch Input Function. The User Switch Input can either be used to trigger the internal FIC logger or switch between calibrations in the dual calibration mode.

Injector Response Time:

This is the amount of time by which the start of fuel flow lags the injector open signal from the ecu. A typical value is 500 μ S.

Ignition:

Select the load input for the ignition map. Set the slew rate for the ignition timing. A typical slew rate value is 0.125 degrees every 5 mS.

MAF:

Select the load input and operating mode for the MAF map. Set the maximum voltage clamp (max output voltage) for the MAF map.

Analog A(B):

Select the load input and operating mode for the Analog A(B) map.

Analog C:

Set the "Units name" for the Analog C input. Turn the 2.2Kohm pull-up resistor on and off. Open the Analog C voltage table

O2:

Select the load input and operating mode for the O2 map. Set the period for the fixed and percentage modes. Set the high and low voltages for bank 1 and bank 2. Set the Start Delay time, which is the amount of time in seconds that the F/IC waits for the O2 outputs to be functional after the F/IC is turned on. Select the High Level Drive option (This option allows for better AFR resolution on certain vehicles with UEGO style oxygen sensors). Select the view as AFR option.

FIC Logger:

Set the on conditions and sample rate for the FIC internal logger. Note: The on conditions must be met and the logger trigger input must be grounded before the internal logger will begin logging.

Switched 12Vdc:

Set the on/off conditions for the Switched 12Vdc output wire.

Frequency:

Select the load input, operating mode, frequency range, clamp high, and clamp low frequencies for the frequency channel.

Boost:

Select the load input and start pressure for the boost control functions. Enable and disable "Over-boost protection". Set the over boost conditions

Connecting to the FIC:

(Note: when connecting to the FIC for the first time, the found new hardware window will appear. The USB drivers will load automatically.)
Connect the FIC to the PC using the supplied USB cable. With a calibration already open, click on the connect button to connect to the F/IC. See Figure 33.

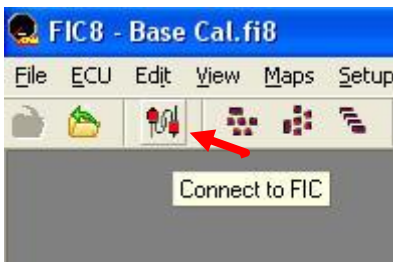


Figure 33. Connect Icon

(Note: If the opened file does not match the file in the F/IC, a window will appear, asking if you want to copy the pc file to the F/IC or if you want to copy the F/IC file to the pc. Follow the on-screen instructions to proceed. See Figure 33.)

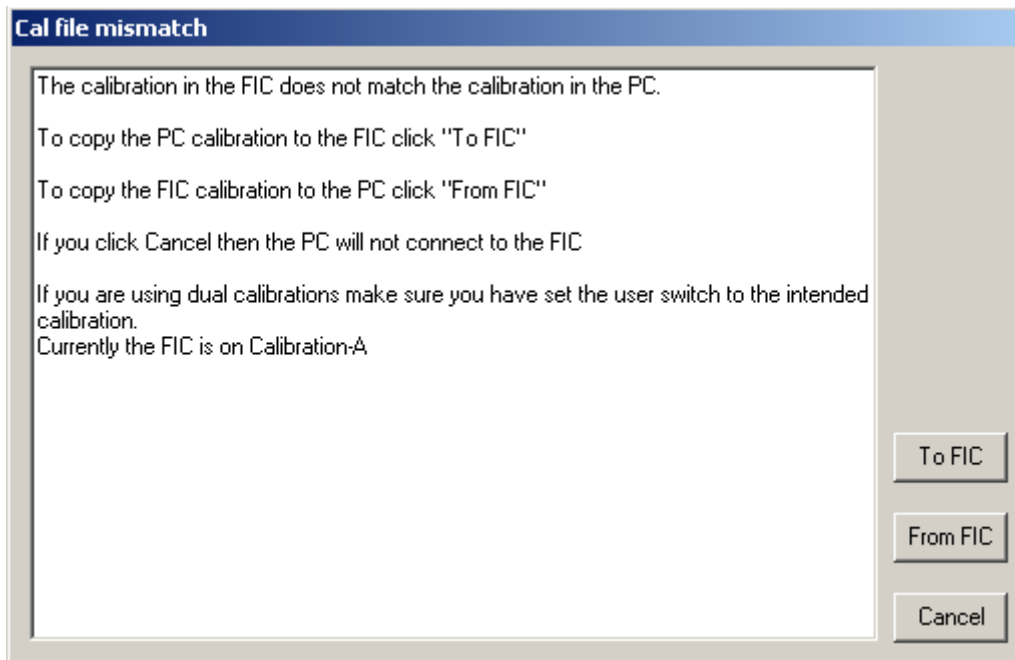


Figure 33. Connecting to the F/IC

To verify the connection status of the FIC, the footer in the lower left corner of the software will display either "On-line" or "Off-line".

Uploading a Cal File:

This function is used to upload a calibration only. To upload a cal file to the FIC, click on file and select "Upload Cal Only". Select the file to upload and click open. Note: When using the "Upload Cal Only" function, the software will overwrite the calibration in the FIC with the selected calibration.

Calibrating the FIC:

When an FIC is installed on a vehicle, it is necessary to calibrate the FIC before any tuning is performed. With the FIC already connected, go to Setup>Calibration. The calibration window will appear. See Figure 34.

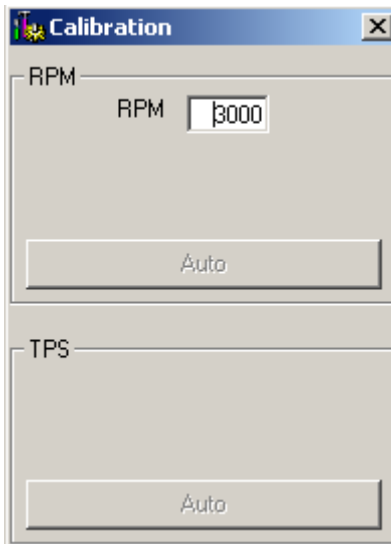


Figure 34. F/IC Calibration Window

The RPM calibration is performed by running the engine at the RPM shown in the RPM box, as directed by the on-screen instructions. The RPM in the window can be changed if desired. Click Auto in the rpm section and follow the on-screen instructions. The TPS calibration is a two-point calibration, one at 0% throttle and one at 100% throttle. Click Auto in the TPS section and follow the on-screen instructions to calibrate the TPS. (Note: For drive by wire applications, the engine may need to be running in order to open the throttle plate to 100%. Quickly blip the throttle to 100% and click the ok button.) Always verify the TPS and RPM calibrations after uploading a file from a different source. (Note: The TPS and RPM calibration settings are stored in the calibration file.)

Gauges Window:

To aid in tuning, the FIC software has a Gauges window that gives real-time reference to the engine's operating conditions. See Figure 35.

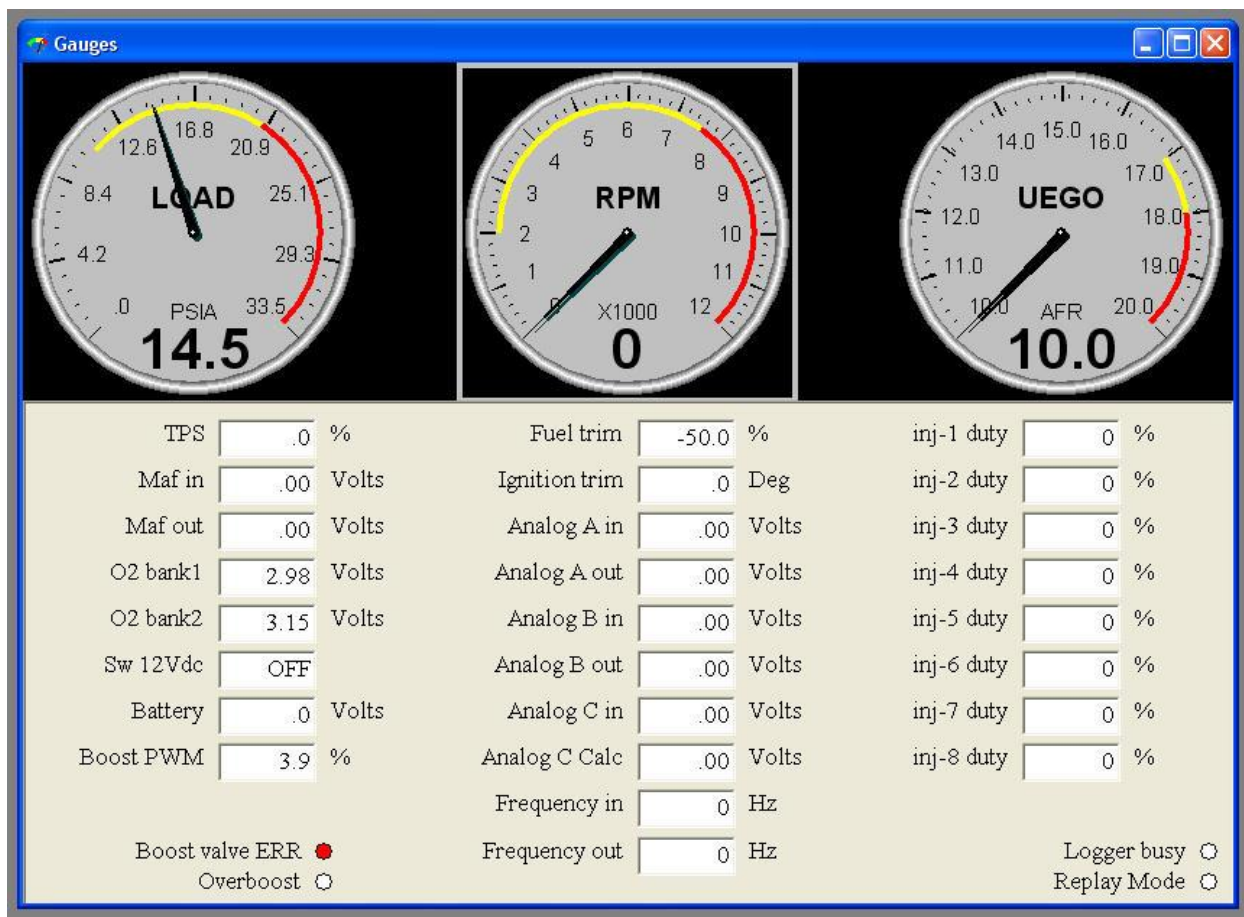


Figure 35. F/IC Gauges Window

The Gauges window contains a user configurable Tachometer, Pressure(Load) gauge, and an Auxiliary gauge (UEGO in Fig. 32), along with real-time displays of TPS, MAF volts, O2 volts, Switched 12Vdc status, Battery volts, Fuel Trim, Analog A, Analog B, and Ignition trim. Each gauge has an overload alarm, yellow highlight, red highlight, and full-scale settings. To configure a gauge, place the cursor over the gauge and double click the left mouse button. A pink needle will appear. Move the cursor over the needle, hold the left mouse button and drag the needle to the desired value. Double clicking on the left mouse button will move the gauge to the next configurable setting.

Auxiliary Gauge (UEGO)

The Auxiliary gauge (UEGO) is a user configurable display based on a 0-5 volt analog input. The Auxiliary gauge was specifically created so the F/IC can display and log AFR based on the analog output from the AEM UEGO gauge or controller. However, since the gauge is user configurable, it will work with any 0-5 volt analog signal. To configure the auxiliary gauge, open the "Auxiliary gauge setup" window by clicking on Setup>Aux Gauge. See Figure 36.

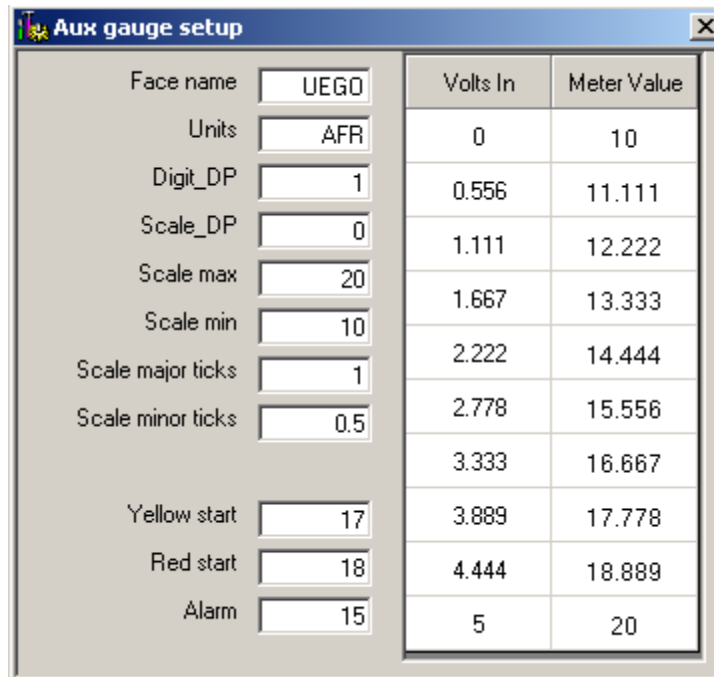


Figure 36. Auxiliary Gauge Setup

The Auxiliary gauge uses a 10 position calibration. Enter the input voltage value into the “Volts In” column. Enter the value to be displayed for each input voltage in the corresponding row of the “Meter Value” column. The appearance of the gauge is configured by parameters on the left side of the “Aux gauge setup” window. The Face Name is displayed in bold letters just above the center of the gauge. The units are displayed in smaller letters below the center of the gauge. “Digit_DP” sets the number of decimal places displayed by the large bold numbers at the bottom of the gauge. “Scale_DP” sets the number of decimal places displayed by the tick mark values on the gauge face. “Scale max” and “Scale min” set the display range of the gauge. “Scale major ticks” and “Scale minor ticks” set the number of major and minor tick marks displayed on the gauge. “Yellow start” and “Red start” set the starting value for the yellow and red regions of the gauge. “Alarm” sets the value at which the gauge needle starts flashing.

Analog C:

The analog C input channel is similar to the Auxiliary Gauge input and was designed for use with an RTD type input, such as the AEM inlet air temp sensor (p/n 30-2010). The Analog C input is internally tied to a user selectable 2.2kohm pull-up resistor to 5 volts. When using an RTD type input, the 2.2K pull-up must be on. If tapping an existing line or using a 0-5 volt sensor, the 2.2k pull-up is not necessary. In order to view more meaningful data, the Analog C input voltage can be scaled to the desired units using the “Analog C voltage table”, see Figure 37. When completing the Analog C voltage table, the smallest voltage value must go in the top row of the volts in column, while the largest voltage value goes in the bottom row. Enter the corresponding scaled values into the Value column. The numbers in the Value column are shown in the “Analog C Calc” box of the “Gauges” window.

	Volts in	Value
Smallest voltage value must be in the first cell. →	0	0
	0.263	100
	0.526	111.111
	0.789	122.222
	1.053	133.333
	1.316	144.444
	1.579	155.556
	1.842	166.667
	2.105	177.778
	2.368	188.889
	2.632	200
	2.895	211.111
	3.158	222.222
	3.421	233.333
	3.684	244.444
	3.947	255.556
	4.211	266.667
	4.474	277.778
	4.737	288.889
Largest voltage value must be in the last cell. →	5	300

Figure 37. Analog C Voltage Table

Date Logging:

There are two types of logging available with the FIC, Internal and PC logging. In both modes of logging, the parameters that appear in the “Gauges” window are logged.

Internal Logging:

The FIC contains an onboard 2 MB logger. The sampling rate and trip conditions for the onboard logger are set in the “FIC Logger” section of the “Setup” window. The sampling rate can be set from 10mS to 1275mS. Sampling every 10mS will give four minutes of data. Sampling every 1275mS will give 21 days of data. In order to start internal logging, all the trip conditions must be met and the “User Switch Input” must be grounded. (Note: When using the “User Switch Input” in the “Dual Calibration” mode, the “Logger Trigger” is always on by default.) To download data from the Internal logger, go to Logger>Download FIC and save the file to the PC. Logged files are saved as delimited text files.

PC Logging:

The FIC software allows you to log data to your PC while connected to the FIC. The sampling rate and file size are determined by the available memory and processor speed of the PC. To start PC logging, go to Logger>PC Logger Start. To stop PC logging go to Logger> PC Logger Stop, give the file a name and save it. Logged files are saved as delimited text files.

Dual Calibration:

The FIC has a “Dual Calibration” mode, which allows the user to switch between two maps with the flip of a switch. Some common uses for this are a race gas map, a pump gas map, or a valet mode map. The “User Switch Input” is used to switch between maps. In order to use the “Dual Calibration” feature of the FIC, the “Dual Calibration” mode must be selected in the “Setup” window, see Figure 28. When the “User Switch Input” wire is not connected to ground, the FIC uses calibration “A”. When the user input switch wire is connected to ground, the FIC uses calibration “B”. To upload/edit Calibration A, verify the user input wire is not connected to ground, then follow the instructions in the “Connecting to FIC” section. To upload/ edit Calibration B, verify the “User Switch Input” wire is connected to ground, then follow the instructions in the “Connecting to FIC” section. (Note: The FIC will disconnect from the PC if you try to switch calibrations while connected.)

Appendix

Oxygen Sensor theory.

Wide-band:

A wide-band sensor works by servo operation between a measuring cell (Nernst cell) and an oxygen pumping cell. These two cells are contained in the O₂ sensor where the exhaust gas is sampled by a chamber connecting the two cells. The controller in the car will change the current applied to the pump cell in an attempt to keep the Nernst cell voltage at a predetermined level. The current that is needed to maintain this balance is the indication of AFR that the ECU uses.

When the FIC is used to modify the signal from a wideband sensor the connection is made to the Nernst cell. Because the Nernst cell acts like a variable voltage source with a predictable impedance the FIC can modify the current from the Nernst cell to effect a change to the AFR.

Narrow-band 0-1vdc Nernst type:

A narrow-band Nernst sensor produces a voltage that represents partial pressure of oxygen left in the exhaust after combustion. This voltage will switch very rapidly as the AFR moves in either direction off of stoich (about 14.7:1). The cars controller manages this by dithering about stoich. The FIC can override this signal with a programmable square-wave to keep the car ECU from seeing other changes that are being made to the fuel injectors or MAF.

F/IC Specs

Processor: Dual 16bit 32mips processors.

Logger:

Internal: 2 MB, 10ms max sample rate,

PC: 10ms fixed sample rate.

Pressure: 2psia - 40psia +/- .5psia resolution .1psia

Analog/MAF: 0vdc - 6vdc Input, 0vdc – 6vdc Output, overload protected

Power: 8-15vdc

Switch Input: GND to activate

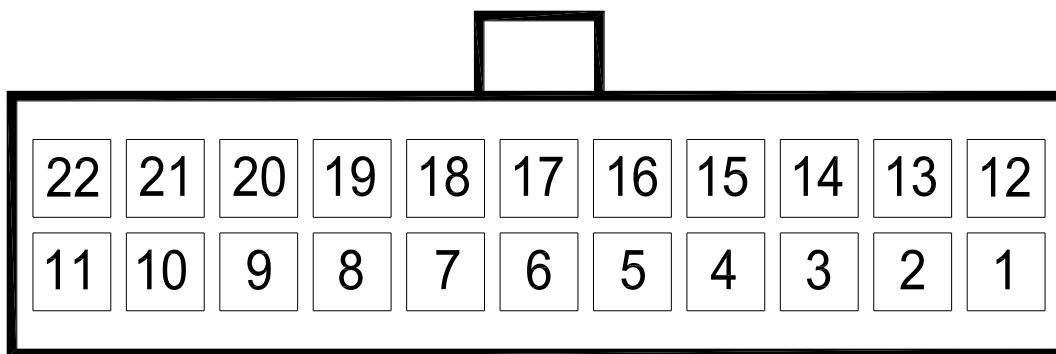
SW12: High-side driver, 1 amp max, overload protected

Injectors (8): 1.7 amps max, overload protected

O₂ : 0vdc -3.5vdc,

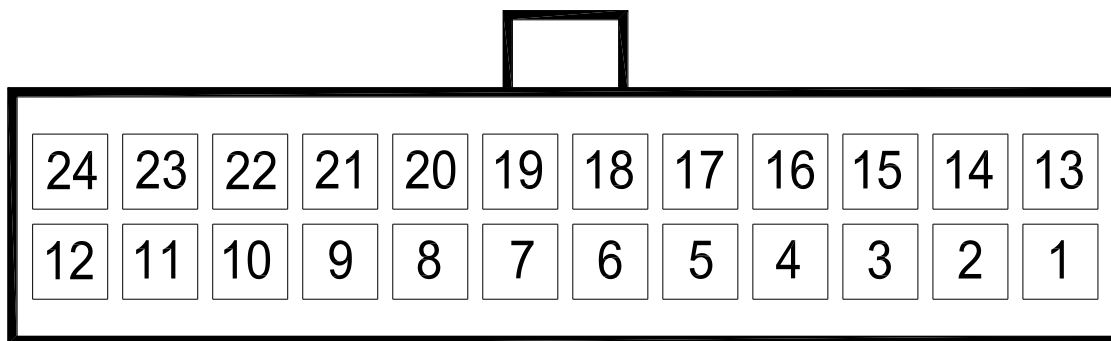
Size: 4.2"L x 7.4"W x 1"H

Pin	Name	Wire Color	Wire Marking	Intercept/Tap
1	Fuel injector 1 input	Dk Blue	INJ 1 IN	Intercept
2	Hall style sensor Cam 2 output	Yellow	CAM2 HALO +	Intercept
3	Hall style sensor Cam 1 output	Yellow	CAM1 HALO +	Intercept
4	Power GND	Black	PWR GND	Tap
5	Signal GND	Black	SIG GND	Tap
6	TPS input	White	TPS +	Tap
7	Hall style sensor Crank input	Green	CRK HALI +	Intercept
8	Mag style Crank sensor negative input	Green	CRK MAGI -	Intercept
9	Mag style sensor Cam 2 positive output	Yellow	CAM2 MAGO +	Intercept
10	Mag style sensor Crank negative output	Green	CRK MAGO -	Intercept
11	Mag style sensor Cam 1 negative output	Yellow	CAM1 MAGO -	Intercept
12	Fuel injector 2 input	Dk Blue	INJ 2 IN	Intercept
13	User Switch Input	White	SW IN	NA
14	Hall style Crank sensor output	Green	CRK HALO +	Intercept
15	Power GND	Black	PWR GND	Tap
16	Ignition power	Red	IGN PWR	Tap
17	Analog B out	Orange	ANALOG B OUT	Intercept
18	Aux Input	Brown	AUX IN	NA
19	Mag style crank sensor positive input	Green	CRK MAGI +	Intercept
20	Mag style Cam 2 sensor negative output	Yellow	CAM2 MAGO -	Intercept
21	Mag style Crank sensor positive output	Green	CRK MAGO +	Intercept
22	Mag style Cam 1 sensor positive output	Yellow	CAM1 MAGO +	Intercept



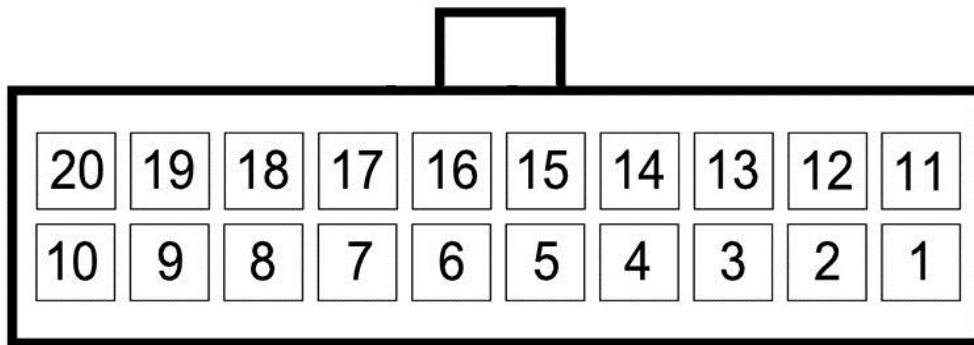
LOOKING AT WIRE SIDE OF CABLE CONNECTOR

Pin	Name	Wire Color	Wire Marking	Intercept/Tap
1	Bank 2 oxygen sensor modifier	Pink	O22 +	Tap
2	Analog B in	Orange	ANALOG B IN	NA
3	Analog A out	Grey	ANALOG A OUT	Intercept
4	Hall style Cam 2 sensor input	Yellow	CAM2 HALI +	Intercept
5	Mag style Cam 2 sensor positive input	Yellow	CAM2 MAGI +	Intercept
6	Analog A in	Grey	ANALOG A IN	Intercep
7	Mag Style Cam 2 sensor negative input	Yellow	CAM2 MAGI -	Intercept
8	Hall style Cam 1 sensor input	Yellow	CAM1 HALI +	Intercept
9	Mag style Cam 1 sensor positive input	Yellow	CAM1 MAGI +	Intercept
10	Mag style Cam 1 sensor negative input	Yellow	CAM1 MAGI -	Intercept
11	Fuel injector 5 input	Dk Blue	INJ 5 IN	Intercept
12	Fuel injector 3 input	Dk Blue	INJ 3 IN	Intercept
13	Banks 1 oxygen sensor modifier	Pink	O21 +	Tap
14	MAF signal input	Dk Blue	MAF IN +	Intercept
15	MAF signal output	Black	MAF OUT +	Intercept
16	Switched 12Vdc output	White	SW12	NA
17	Fuel injector 6 output	Dk Blue	INJ 6 OUT	Intercept
18	Fuel injector 5 output	Dk Blue	INJ 5 OUT	Intercept
19	Fuel injector 4 output	Dk Blue	INJ 4 OUT	Intercept
20	Fuel injector 3 output	Dk Blue	INJ 3 OUT	Intercept
21	Fuel injector 2 output	Dk Blue	INJ 2 OUT	Intercept
22	Fuel injector 1 output	Dk Blue	INJ 1 OUT	Intercept
23	Fuel injector 6 input	Dk Blue	INJ 6 IN	Intercept
24	Fuel injector 4 input	Dk Blue	INJ 4 IN	Intercept



LOOKING AT WIRE SIDE OF CABLE CONNECTOR

Pin	Name	Wire Color	Wire Marking	Intercept/Tap
1	Fuel injector 7 signal in	Dk Blue	INJ 7 IN	Intercept
2	Fuel injector 8 signal in	Dk Blue	INJ 8 IN	Intercept
3	Fuel injector 7 signal out	Dk Blue	INJ 7 OUT	Intercept
4	Fuel injector 8 signal out	Dk Blue	INJ 8 OUT	Intercept
5	Cam3 signal in +, MAG	Yellow	CAM3 MAGI +	Intercept
6	Cam3 signal in -, MAG	Yellow	CAM3 MAGI -	Intercept
7	Cam3 signal in +, HALL	Yellow	CAM3 HALI +	Intercept
8	Cam4 signal in +, MAG	Yellow	CAM4 MAGI +	Intercept
9	Cam4 signal in -, MAG	Yellow	CAM4 MAGI -	Intercept
10	Cam4 signal in +, HALL	Yellow	CAM4 HALI +	Intercept
11	Cam3 signal out -, MAG	Yellow	CAM3 MAGO -	Intercept
12	Cam3 signal out +, MAG	Yellow	CAM3 MAGO +	Intercept
13	Cam3 signal out +, HALL	Yellow	CAM3 HALO +	Intercept
14	Cam4 signal out -, MAG	Yellow	CAM4 MAGO -	Intercept
15	Cam4 signal out +, MAG	Yellow	CAM4 MAGO +	Intercept
16	Cam4 signal out +, HALL	Yellow	CAM4 HALO +	Intercept
17	Boost solenoid driver	White	BOOST	NA
18	Frequency output	Grey	FREQ OUT	Intercept
19	Frequency input	Brown	FREQ IN	Intercept
20	Aux analog-C	Orange	ANALOG C IN	NA



LOOKING AT WIRE SIDE OF CABLE CONNECTOR

AEM Electronics warranty

Advanced Engine Management Inc. warrants to the consumer that all AEM High Performance products will be free from defects in material and workmanship for a period of twelve (12) months from date of the original purchase. Products that fail within this 12-month warranty period will be repaired or replaced at AEM's option, when determined by AEM that the product failed due to defects in material or workmanship. This warranty is limited to the repair or replacement of the AEM part. In no event shall this warranty exceed the original purchase price of the AEM part nor shall AEM be responsible for special, incidental or consequential damages or cost incurred due to the failure of this product. Warranty claims to AEM must be transportation prepaid and accompanied with dated proof of purchase. This warranty applies only to the original purchaser of product and is non-transferable. All implied warranties shall be limited in duration to the said 12-month warranty period. Improper use or installation, accident, abuse, unauthorized repairs or alterations voids this warranty. AEM disclaims any liability for consequential damages due to breach of any written or implied warranty on all products manufactured by AEM. Warranty returns will only be accepted by AEM when accompanied by a valid Return Merchandise Authorization (RMA number. Product must be received by AEM within 30 days of the date the RMA is issued.

Please note that before AEM can issue an RMA for any electronic product, it is first necessary for the installer or end user to contact the EMS tech line at 1-800-423-0046 to discuss the problem. Most issues can be resolved over the phone. Under no circumstances should a system be returned or a RMA requested before the above process transpires.

AEM will not be responsible for electronic products that are installed incorrectly, installed in a non approved application, misused, or tampered with.

Any AEM electronics product can be returned for repair if it is out of the warranty period. There is a minimum charge of \$50.00 for inspection and diagnosis of AEM electronic parts. Parts used in the repair of AEM electronic components will be extra. AEM will provide an estimate of repairs and receive written or electronic authorization before repairs are made to the product.