

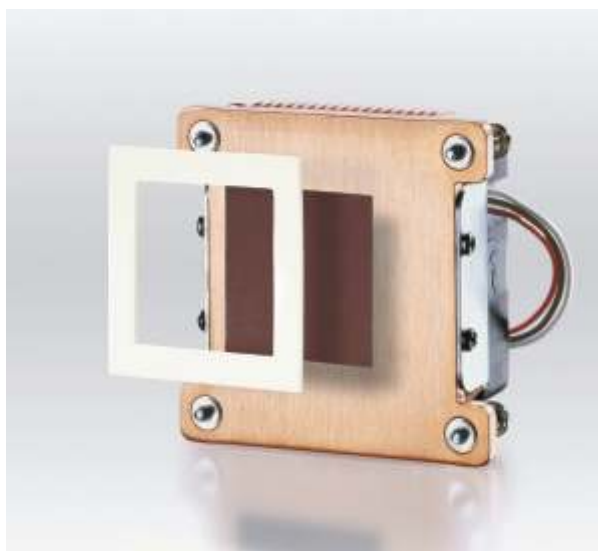
Keratherm® - Softtherm® 86/300, 86/320, 86/450

This group of Softtherm® films has a very good thermal behavior. The films are characterized by low thermal resistance and best heat dissipation, as well as good dielectric strength. Good compressibility and low shore hardness ensure reliable and simple processability.

Properties	Unit	86/300	86/320	86/450
Colour		blue	mandarin	chocolate
Thermal properties				
Thermal resistance R_{th}	K/W	0.41	0.50	0.30
Thermal impedance R_{ti}	°Cmm²/W	166	147	121
	Kin²/W	0.25	0.23	0.19
Thermal conductivity λ	W/mK	3.0	2.5	4.2
Electrical properties				
Breakdown voltage $U_{d;ac}$	kV	8.0	5.0	2.5
Dielectric breakdown $E_{d;ac}$	kV/mm	16.0	10.0	5.0
Volume resistivity	Ωm	1.0×10^{11}	0.68×10^{12}	3.6×10^{12}
Dielectric loss factor $\tan \delta$	1	5.0×10^{-3}	2.9×10^{-2}	3.0×10^{-3}
Dielectric constant ϵ_r	1	3.3	3.4	2.5
Mechanical properties				
Measured thickness (+/-10%)	mm	0.5	0.5	0.5
Hardness	Shore 00	60 - 70	30 - 35	65 - 80
Youngs modulus*	N/cm²	24	32	94.5
Physical properties				
Density	g/cm³	1.71	1.69	1.32
Application temperature	°C	-60 to +200	-40 to +150	-40 to +180
TML	Ma.-%	< 0.35	< 0.46	< 0.40
Flame class	UL	94V-0	-	94V-0***
Possible thickness**	mm	0.5 - 5.0	1.0 - 5.0	0.5 - 3.0

*Youngs modulus sample size 30mmx30mmx2.5mm; variable contact pressure;
compression 50% of the measured thickness

***Kerafol test according to UL



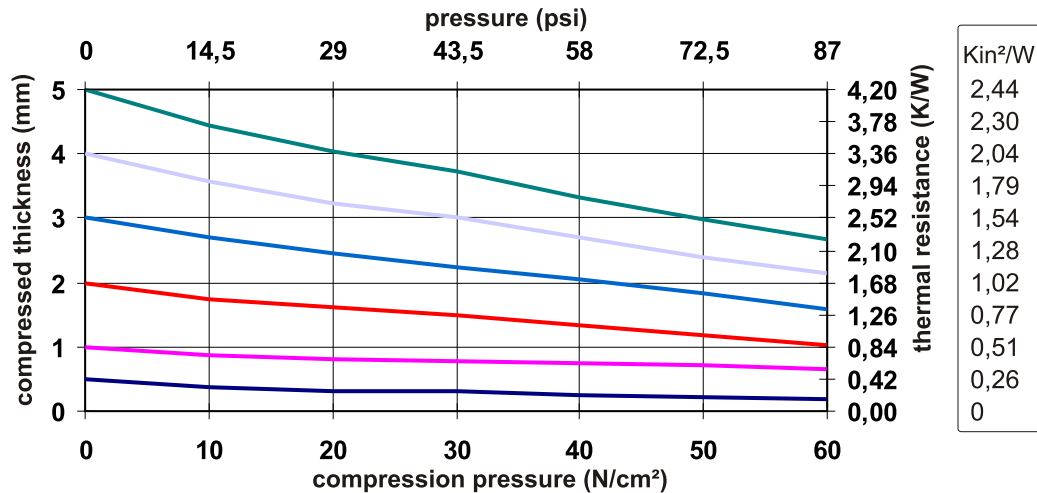
Applications:

- RD-RAM memory modules
- Heat pipe thermal solutions
- Automotive engines
- Control units
- Plasma supply console

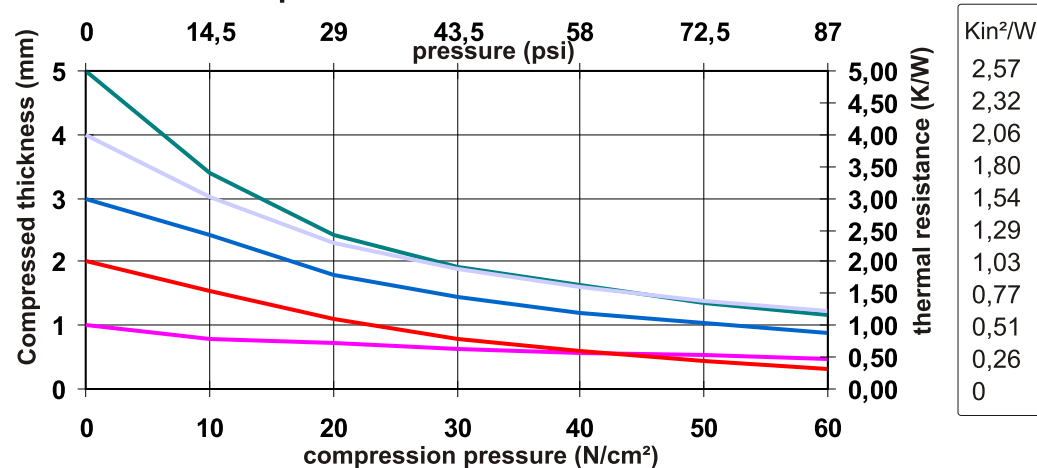
Optional available with adhesive coating!

The data presented in this leaflet are in accordance with the present state of our knowledge. All statements, technical information and recommendations herein are based on tests we believe to be reliable. The customer is thereby not absolved from carefully checking all supplies immediately on receipt. The recommendations made in this catalogue should be checked by preliminary trials because of conditions during processing over which we have no control, especially where other companies' raw materials are also being used. Before using, user shall determine the suitability of the product for its intended use, and the user assumes all risks and liability whatsoever in connection therewith. We reserve the right to alter product constants within the scope of technical process or new developments. The recommendations do not absolve the customer from the obligation of investigating the possibility of infringement of third parties' right and, if necessary, clarifying the position. Sellers' and manufacturer' only obligation shall be to replace such quantity of the product proved to be defective. Neither seller nor manufacturer shall be liable either in tort or contract for any loss or damage, direct or incidental, or consequential, including loss of profits or revenue arising out of the use or the inability to use a product. No statement, purchase order or recommendations by seller or purchaser not contained herein shall have any force or effect unless in an agreement signed by the officers of the seller and manufacturer. Last update: 06/2011

Compressibilities of Softtherm® 86/300



Compressibilities of Softtherm® 86/320



Compressibilities of Softtherm® 86/450

